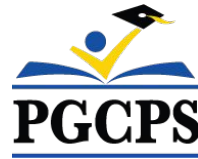




PGCPS . **ENGAGE . DESIGN . BUILD . COMMUNICATE** . PGCPS



NEW GLENRIDGE AREA MIDDLE SCHOOL

CONSTRUCTION UPDATE MEETING | JUNE 6th, 6:00 PM



SERVICIOS DE INTERPRETACIÓN *INTERPRETING SERVICES*

La interpretación simultánea
está disponible en español.
*Simultaneous interpretation is
available in Spanish.*



SERVICIOS DE INTERPRETACIÓN

INTERPRETING SERVICES



On a computer-- At the bottom of the screen will be an interpretation globe. Click that globe and then select *Spanish*.

En una computadora-- En la parte baja de la pantalla habrá un globo de interpretación. Haga clic en ese globo y seleccione "Spanish."



On a mobile device-- At the bottom of the screen, tap the ellipses icon on the bottom right (...).

- Tap *Language Interpretation*.
- Tap *Spanish*.

En un dispositivo móvil-- En la parte baja de la pantalla, toca el icono de elipses en la parte baja derecha (...).

- Toque *Language Interpretation*.
- Toque *Spanish*.



We value your input.

- Please type your questions/comments in the Q&A area of Zoom.
- Questions and answers from this town hall will be posted on the school project page at <https://offices.pgcps.org/cip/>.



Our Commitment

PGCPS is moving swiftly to deliver safe, state-of-the-art, and sustainable learning environments for our students, teachers, and communities.

Through a three-pronged approach, traditional Capital Improvement, Staged Renovations, and the nation's first Public School P3 Design-Build-Maintain approach, otherwise known as the Blueprint Schools Program, we're on track to deliver over 25 modernized school facilities in just 10 years.



Agenda

- Team Introductions
- Project Scope
- Construction Overview
- Q&A



Team Introductions

PGCPS Department of Capital Programs

- **Dr. Charoscar Coleman**, *Chief Operating Officer*
- **Shawn Matlock**, *Director*
- **Will Smith**, *Project Management Supervisor*
- **Hiwot Haileselassie**, *Project Manager*

Grimm+Parker

- **Jonathan Hill**, *Project Manager*

MCN Build

- **Zayd Sharif**, *Project Manager*



Project Scope

Glenridge Middle School will be a new 1,200-student middle school built within the existing Glenridge Community Park. The school is being constructed on the upper-plateau of the park with access from Flintridge Drive and Gallatin Street. The geothermally heated and cooled building with rooftop solar-array will have a new gymnasium and two-story administration-wing at the upper part of the park connecting via a school commons with cafeteria and media center to a three-story academic bar nestled into the slope that approaches the park pond. A new playfield, outdoor learning areas and integration into the existing park pathway system will be part of the project.



Project Vision

When New Glenridge Area Middle School is completed, it will be one of PGCPS' **21st century schools**. It was planned, and designed with the idea of creating **a learning environment that will support students to thrive**. It will use both **Geothermal, and Solar Energy** which will make it a **highly energy efficient building**, and create an **opportunity for students to be exposed to technology that conserves energy**.

The School in the Park



South Classroom Bar



Student Commons View



Student Commons View



North Courtyard





Construction Overview

November 2022	Building Underground Work & Foundation Work
December 2022	Structural Steel & Complete Geothermal Field
March 2023	Roofing Work
April 2023	Building Envelop Work & Interior Construction Begins
May 2023	Complete Concrete Building Work
Summer 2023	Building Envelop
September 2023	Permanent Power Online
Fall 2023	Finishes Work
Winter 2023	Commissioning and Start-up
March 2024	Substantial Completion



Construction Overview

Major Completed Work	Work in Progress	Next Steps
Structural Steel	Interior Wall Framing	Completion of Underground Utilities
Building Concrete Work	Exterior Building Envelope	Building Exterior Finishes
Geothermal Well Field	Interior Building Mech/Elec/Plumbing Rough-ins	Site Grading in Prep for Landscaping
Underground Water Detention Facility	WSSC Water Line Work	Site Concrete Work
WSSC Sanitary Work	Electrical Service Line (Underground)	
	Roofing	



Construction Overview





Construction Overview

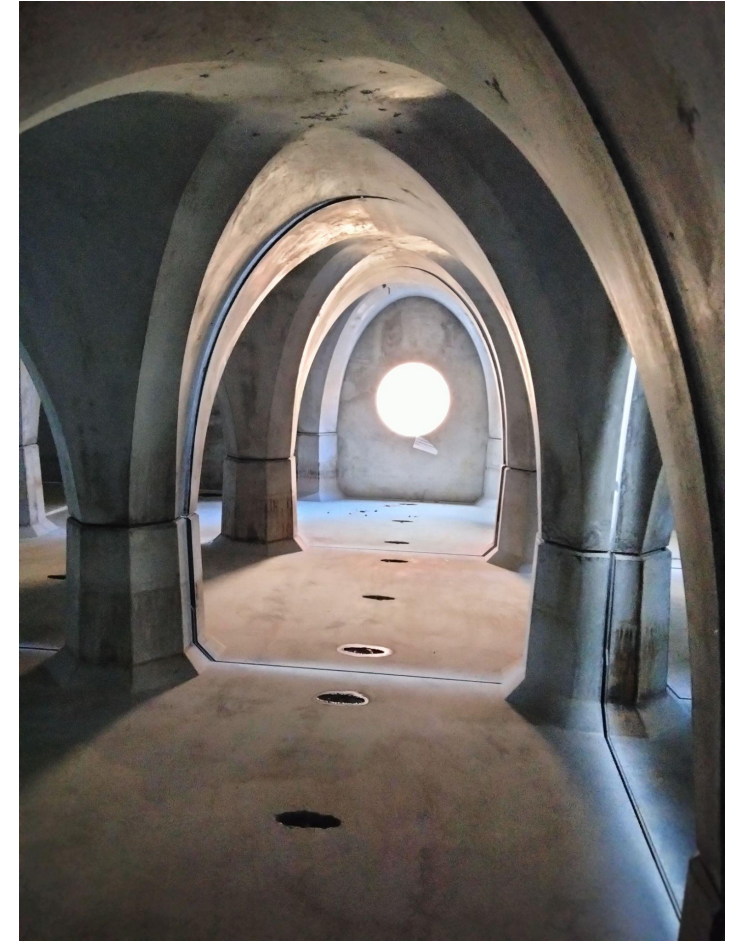




Construction Overview



Stormwater Management System



Stormwater Management System



Construction Overview



South Elevation



Wall Framing and Rough-ins in a Typical Corridor



Construction Overview



Overlook Bridge



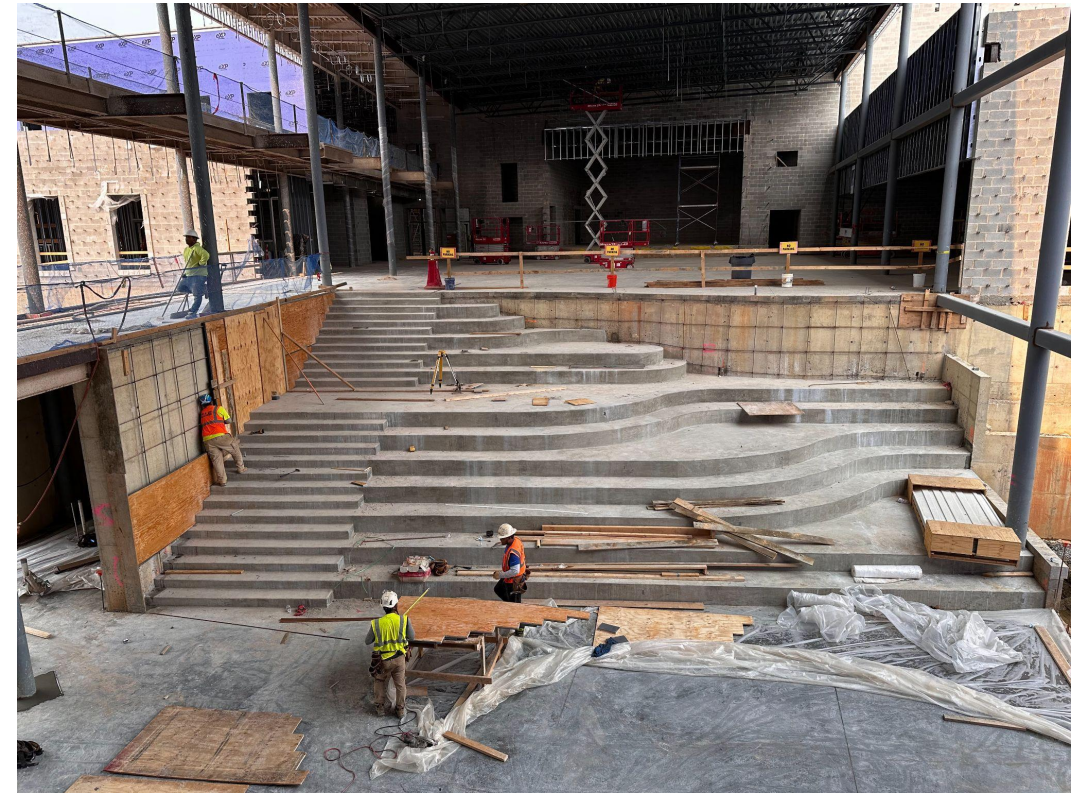
Southwest Corner of the Classroom Wing



Construction Overview



Student Commons



Student Commons



- Please type your questions/comments in the Q&A area of Zoom.
- Questions and answers from this town hall will be posted on the New Glenridge Area MS project page at www.pgcps.org/cip.
- If you have additional questions, please email them to capital.programs@pgcps.org.



Thank You!

To submit additional questions and to view today's presentation, visit www.pgcps.org/cip.