



Creative Collaboration
Sustainable Solutions
Engaging Environments

Glenridge Middle School
Project Planning Committee Meeting #2
August 6, 2018

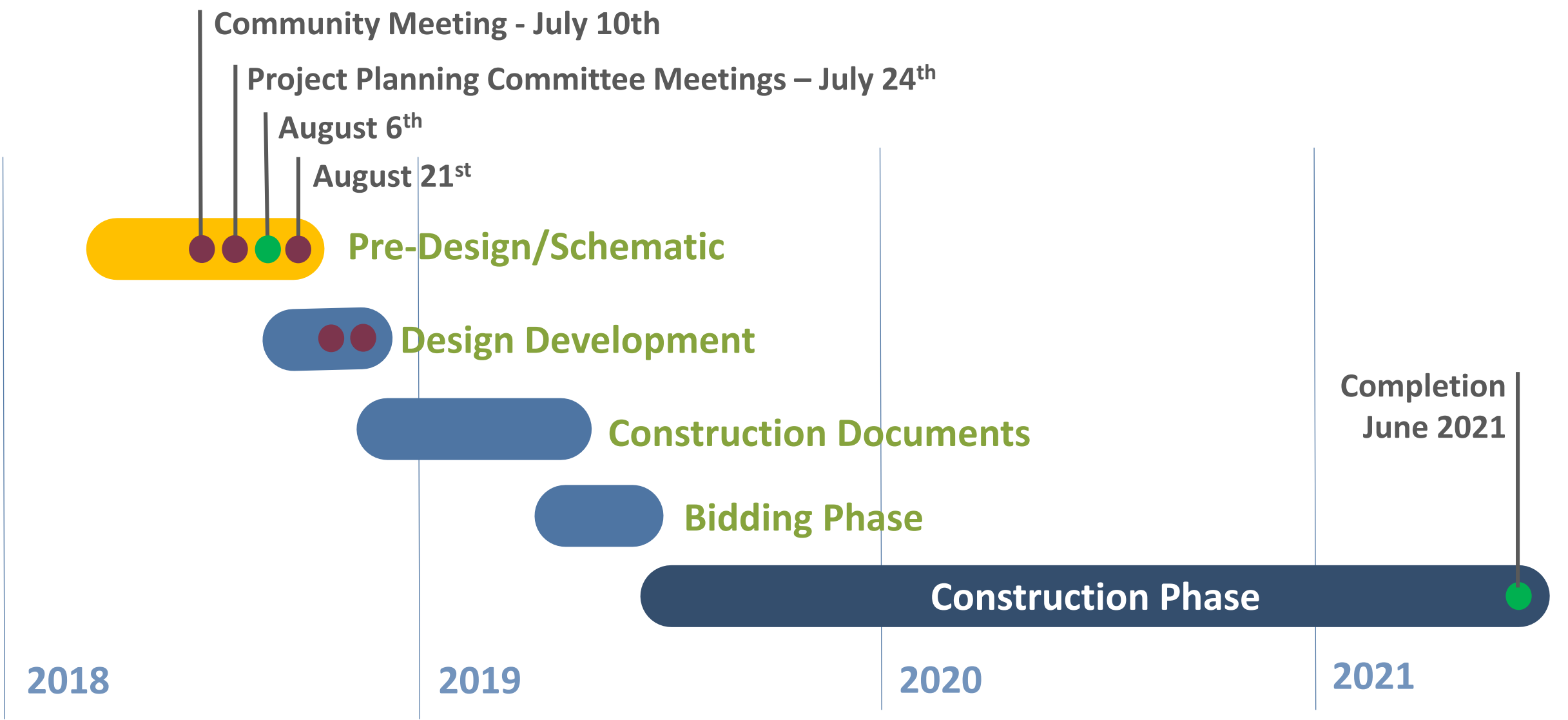


Today's Agenda

1. Welcome
2. Recap Meeting # 1
3. Three Schemes, Refined
 - Plan Updates
 - Site Options
 - Academic Wings
4. Concept Analysis
5. Next Steps

Q+A

Project Schedule



Community Meeting - July 10th

Project Planning Committee Meetings – July 24th

August 6th

August 21st

Pre-Design/Schematic

Design Development

Construction Documents

Bidding Phase

Construction Phase

Completion
June 2021

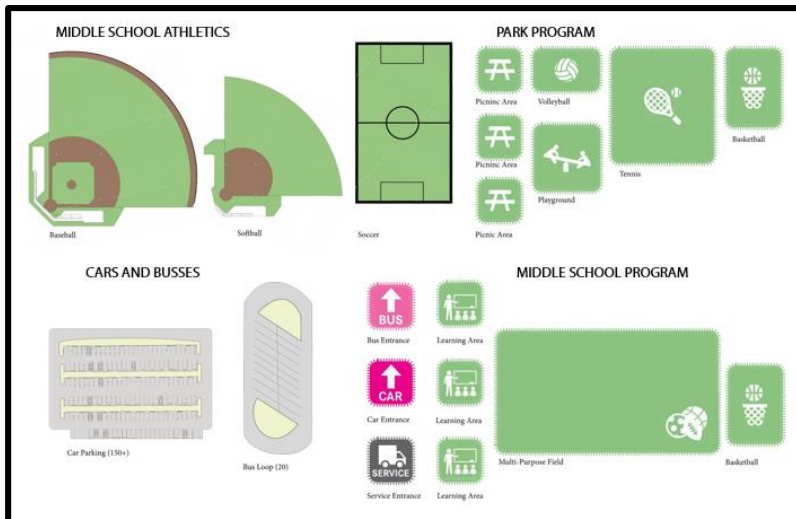
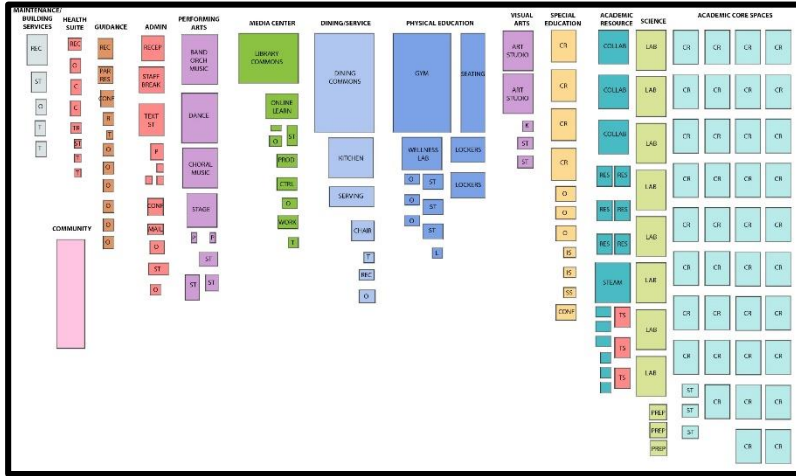
2018

2019

2020

2021

Meeting #1 Recap



Meeting #1 Recap

Integrate school with the park



Spaces for outdoor learning

Separate entrances for cars + busses



Welcoming approach + entry

Trail connections to the park and fields



Project Goals + Guiding Principles

The new Glenridge Middles School will...

... provide resources and *spaces for students to thrive* and achieve their goals

... become a *community hub* that is open and accessible to its diverse neighborhood

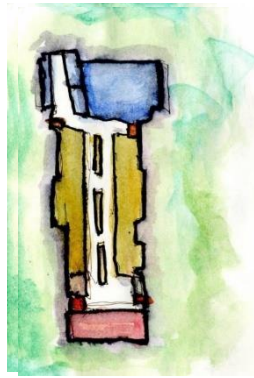
... integrate with its Glenridge Park setting and *connect with nature*

... be *welcoming and inviting to all* students, parents, staff and neighbors

... enhance a *sense of pride* in the community

... be a *school in the park*

Design Concepts



BAR



CLUSTER



CASCADE

<p>SITE ACCESS</p> <ul style="list-style-type: none"> • Explore more site options 	<p>Bus – Gallatin Car - Flintridge</p>	<p>Bus – Flintridge Car - Flintridge</p>	<p>Bus – Flintridge Car - Gallatin</p>
<p>MASSING</p>	<p>Compact footprint 4-story bar</p>	<p>2-story public + 3-story academic</p>	<p>1-story public + 3-story academic</p>
<p>ACADEMIC WING</p> <ul style="list-style-type: none"> • Include diagrams 	<p>1 floor per grade</p>	<p>3 clusters per grade</p>	<p>1 floor per grade</p>
<p>COMMON SPACES</p>	<p>Separate Dining and Media</p>	<p>Combined Dining and Media</p>	<p>Terraced Dining and Media</p>



BAR

Bar Scheme

Original Site Plan



Bar Scheme

Site Option 1

Bus Entrance

Gallatin Street

Car Entrance

Flintridge Drive

- Parking lot close to main + gym entries
- Less room for queuing
- Fields across parking lot



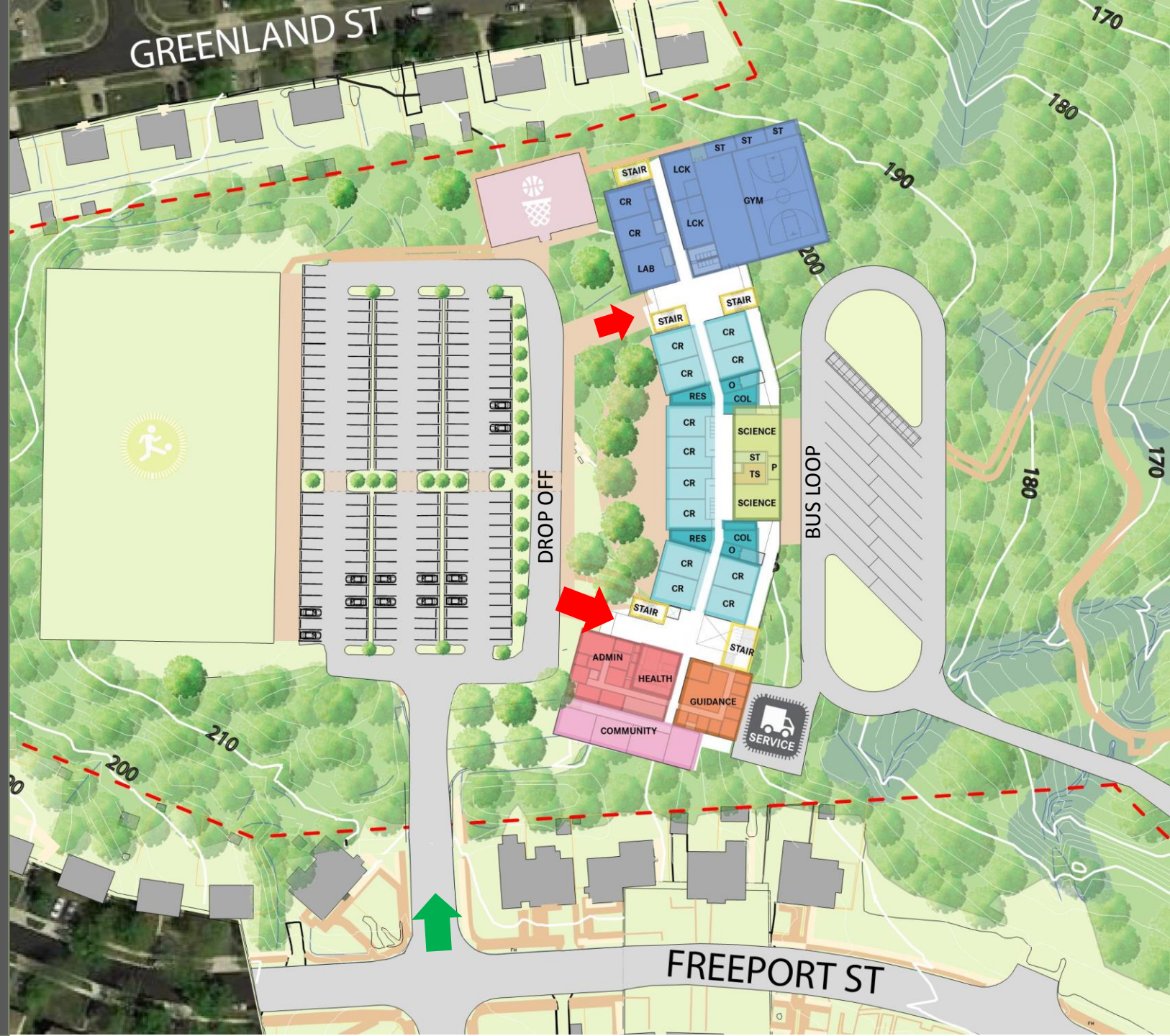
Bar Scheme

Level 0



Bar Scheme

Level 1



Bar Scheme

Level 2



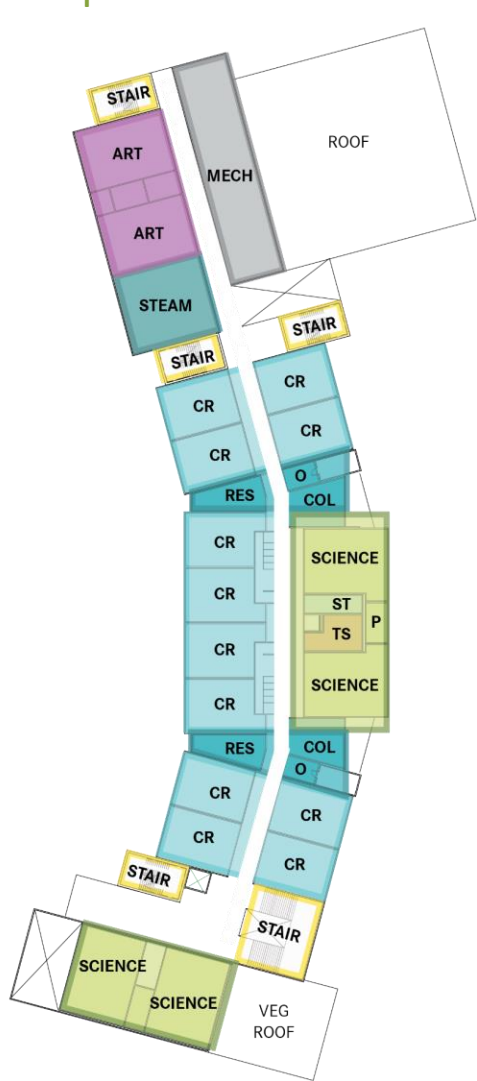
Bar Scheme

Level 3

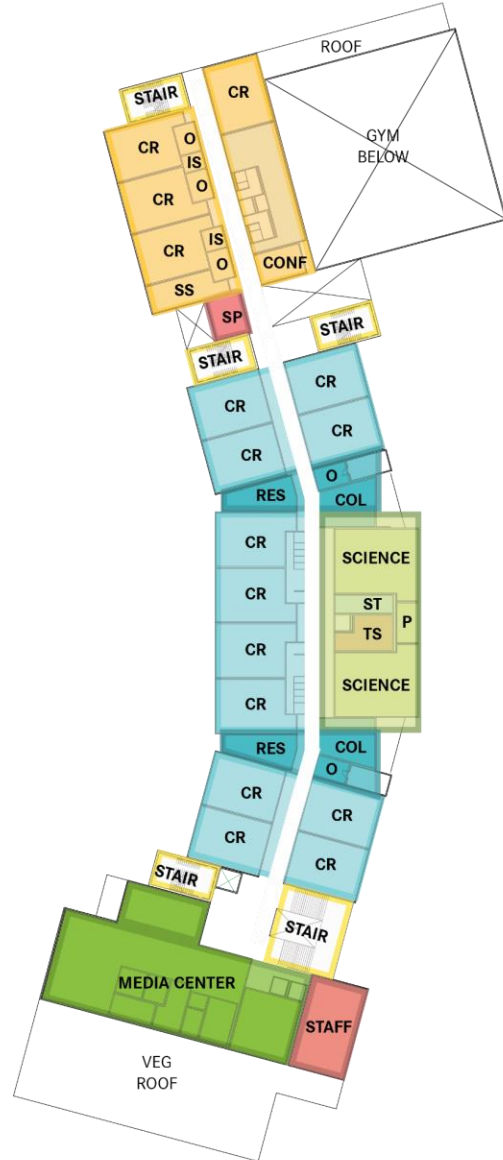


Bar Scheme

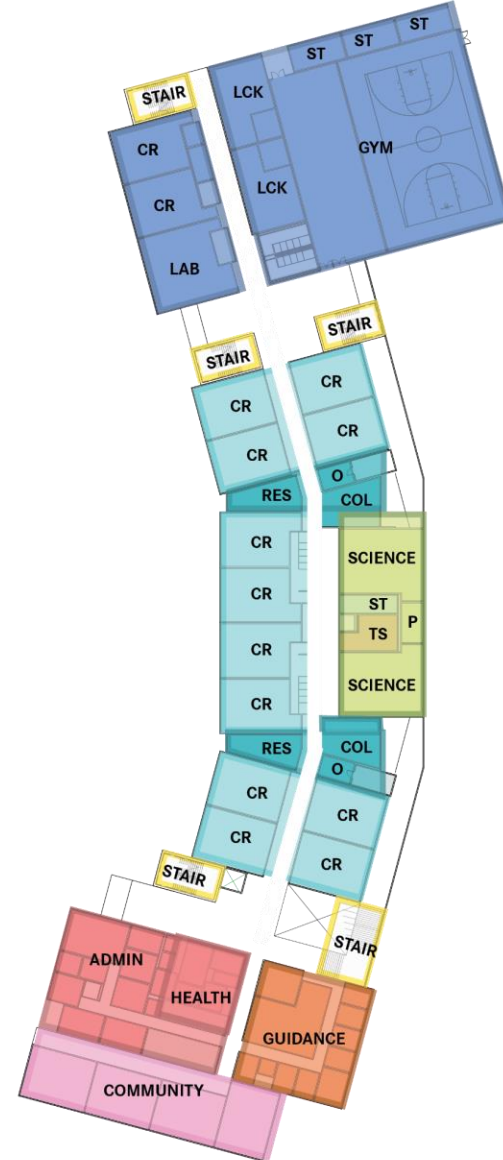
Site Option 1



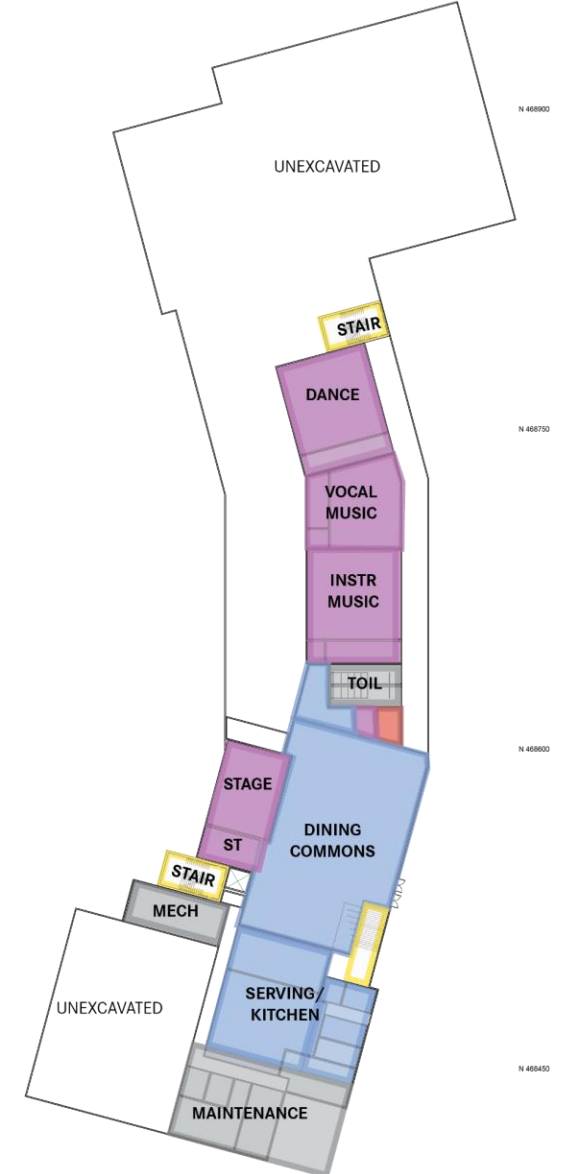
Level 3



Level 2



Level 1



Level 0

Bar Scheme - Alternate Site Option 2

Bus Entrance
Gallatin Street

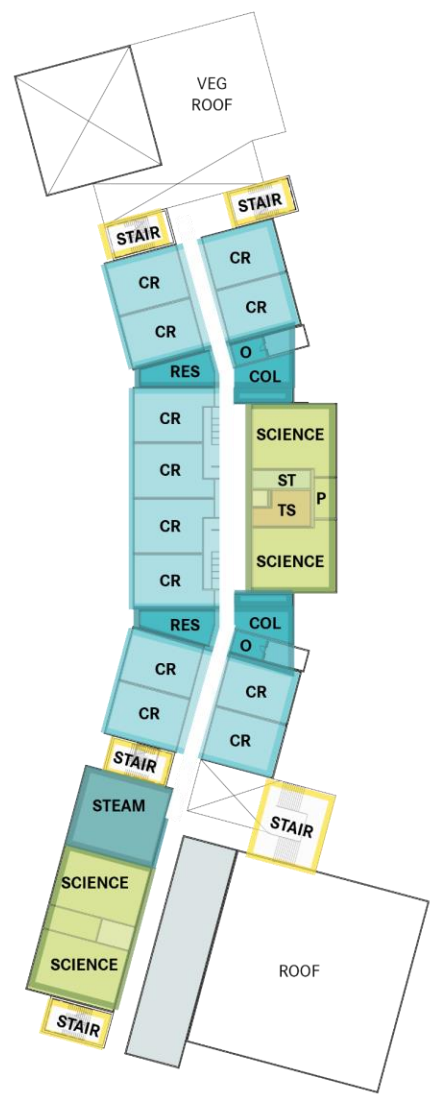
Car Entrance
Flintridge Drive

- Parking lot in rear of site
- More room for queuing
- Fields in “front yard” of site

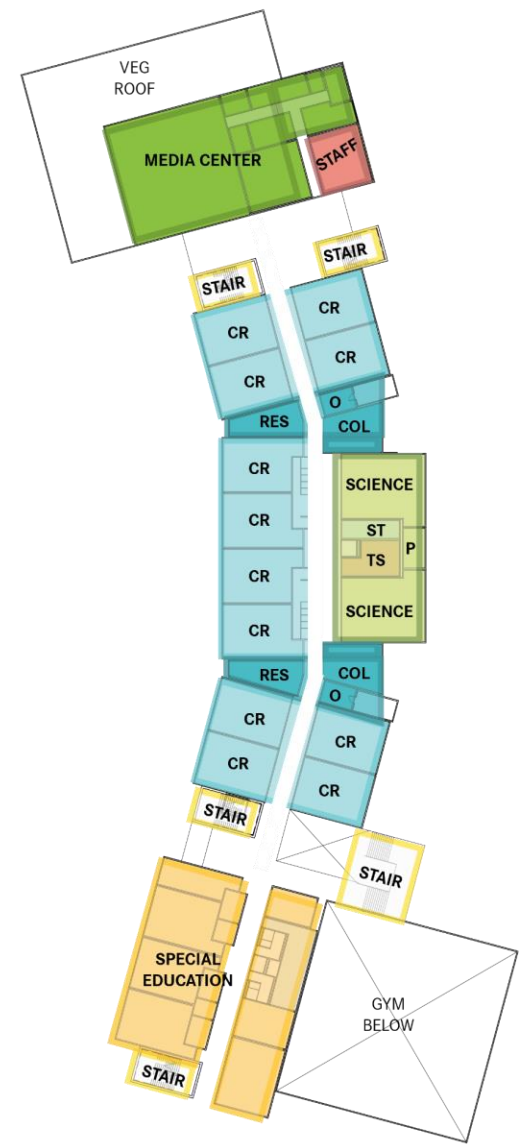


Bar Scheme - Alternate

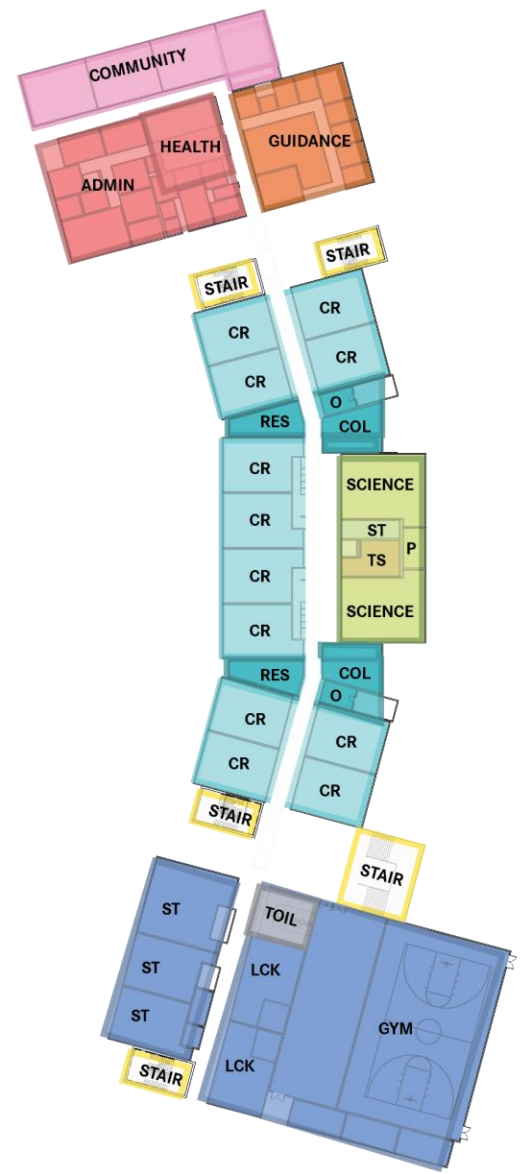
Site Option 2



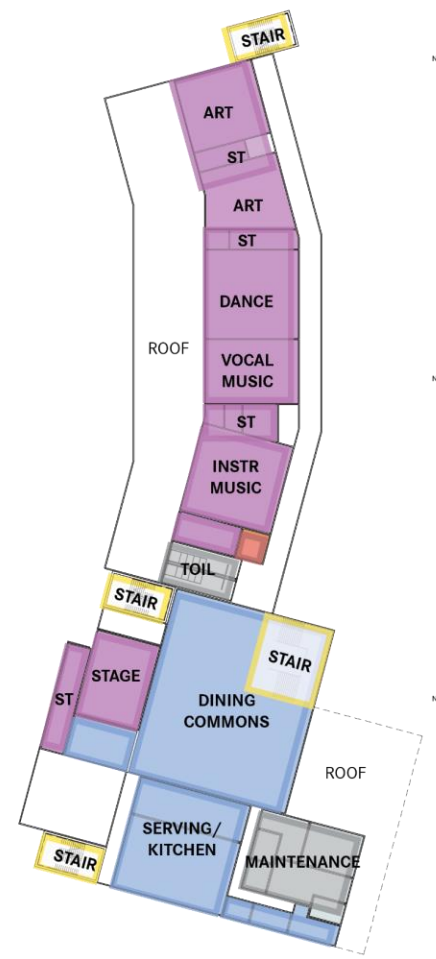
Level 3



Level 2



Level 1



Level 0

N 468150

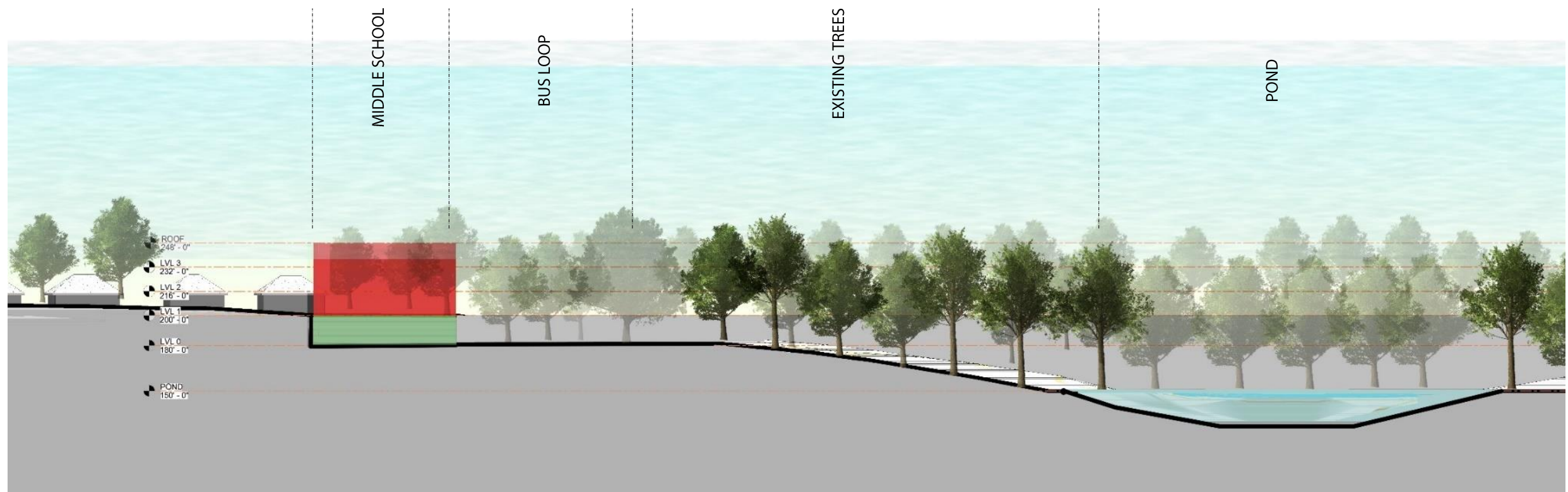
N 468000

N 467950

N 467700

Bar Scheme

SECTION



Section 2
1" = 30'-0"

Bar Scheme

Site Options



Site Option 1



Site Option 2

Bar Scheme

ACADEMIC WING

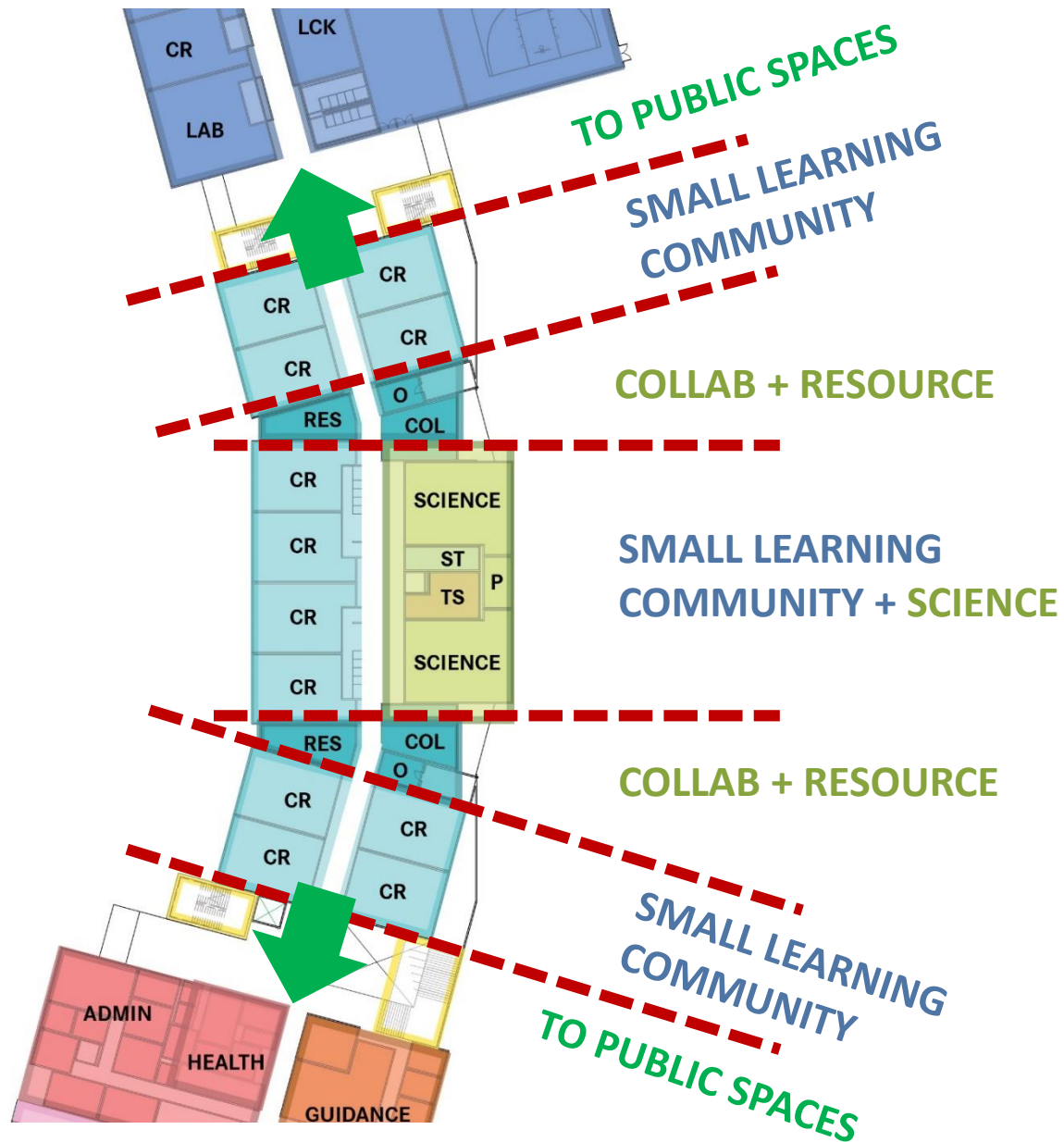
Small Learning Communities include:

- Grade level teams
- Facilitate a variety of instructional strategies
- Flexible learning environment
- Sense of community for students + teachers
- Collaborative learning areas
- Environments for a variety of learning styles



Bar Scheme

ACADEMIC WING



BAR SCHEME

- 3 SLC clusters
- Create distinct SLC identities
- Shared collaboration spaces
- Traffic flows through clusters
- Academic wing located between public anchors



CLUSTER

Cluster Scheme

Original Site Plan



Cluster Scheme

Site Option 1

Bus Entrance

- Gallatin Street

Car Entrance

- Flintridge Drive

Separate the car and bus loop entrance.



Cluster Scheme

Site Option 2

Bus Entrance

- Flintridge Drive

Car Entrance

- Gallatin Street

Introduce the Gallatin Street car entrance.



Cluster Scheme

Level 0



Cluster Scheme

Level 1

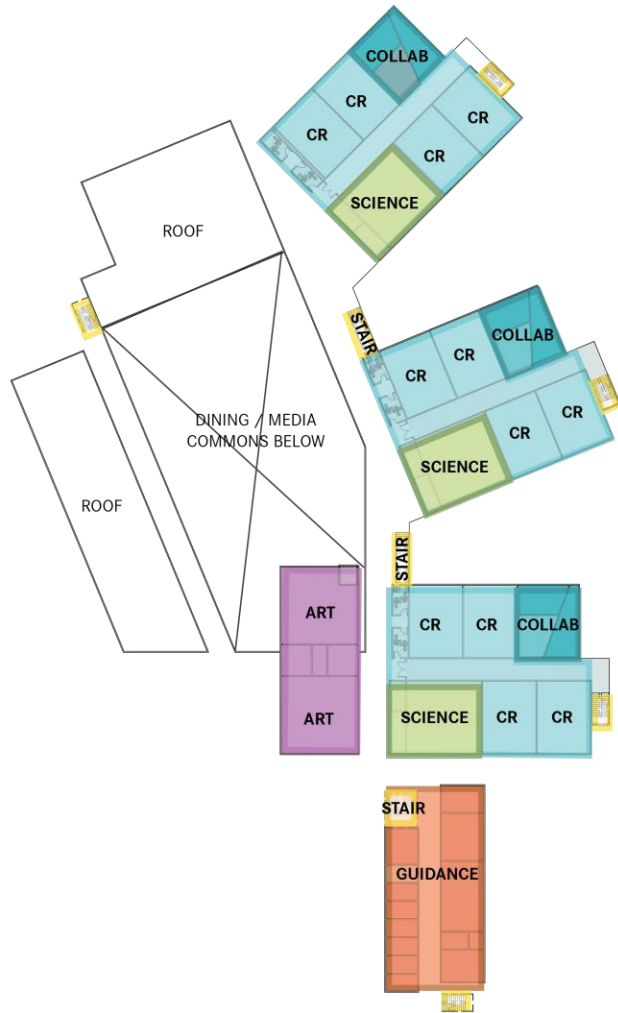


Cluster Scheme

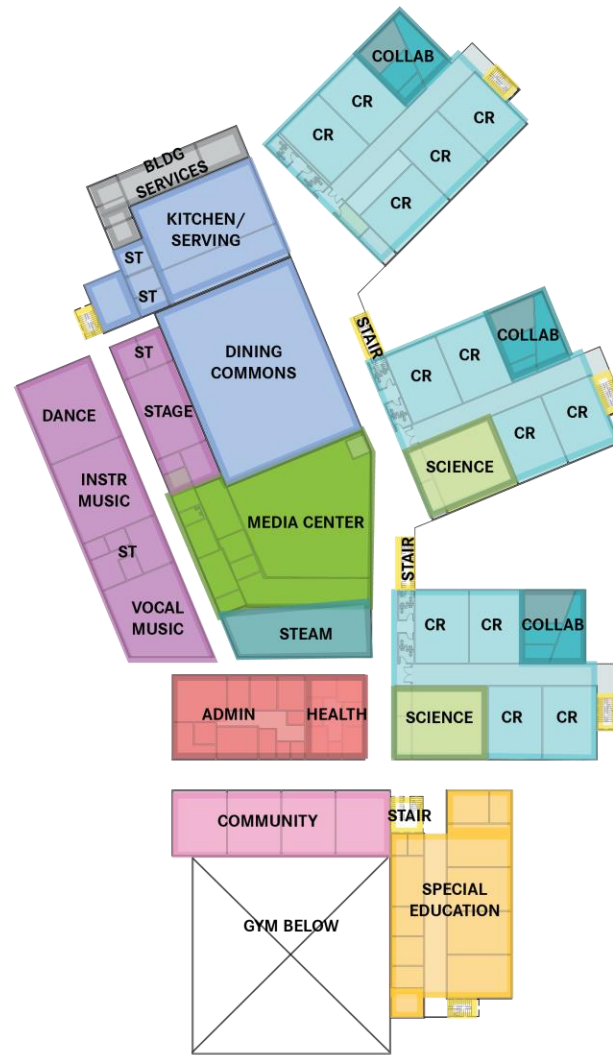
Level 2



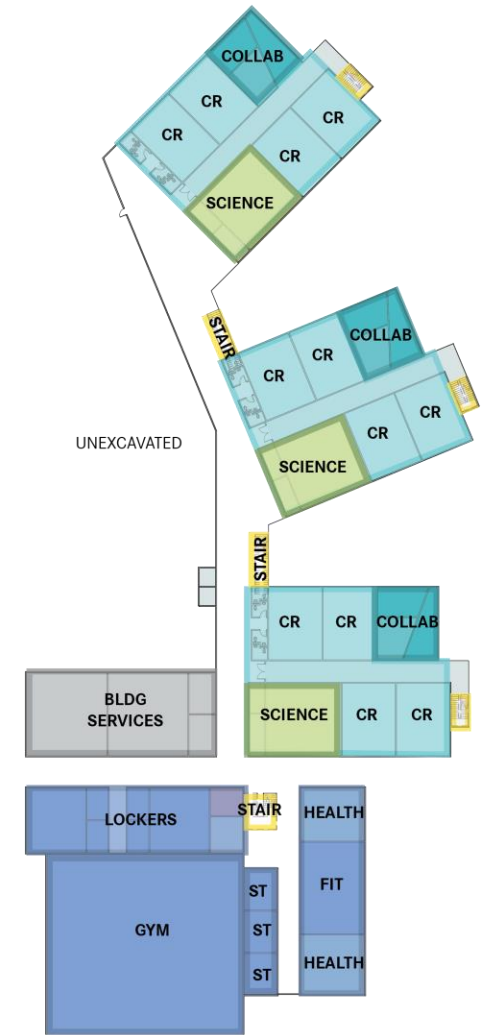
Cluster Scheme



Level 2



Level 1



Level 0

Cluster Scheme

SECTION



② Section 2
1" = 30'-0"

Cluster Scheme

Site Options

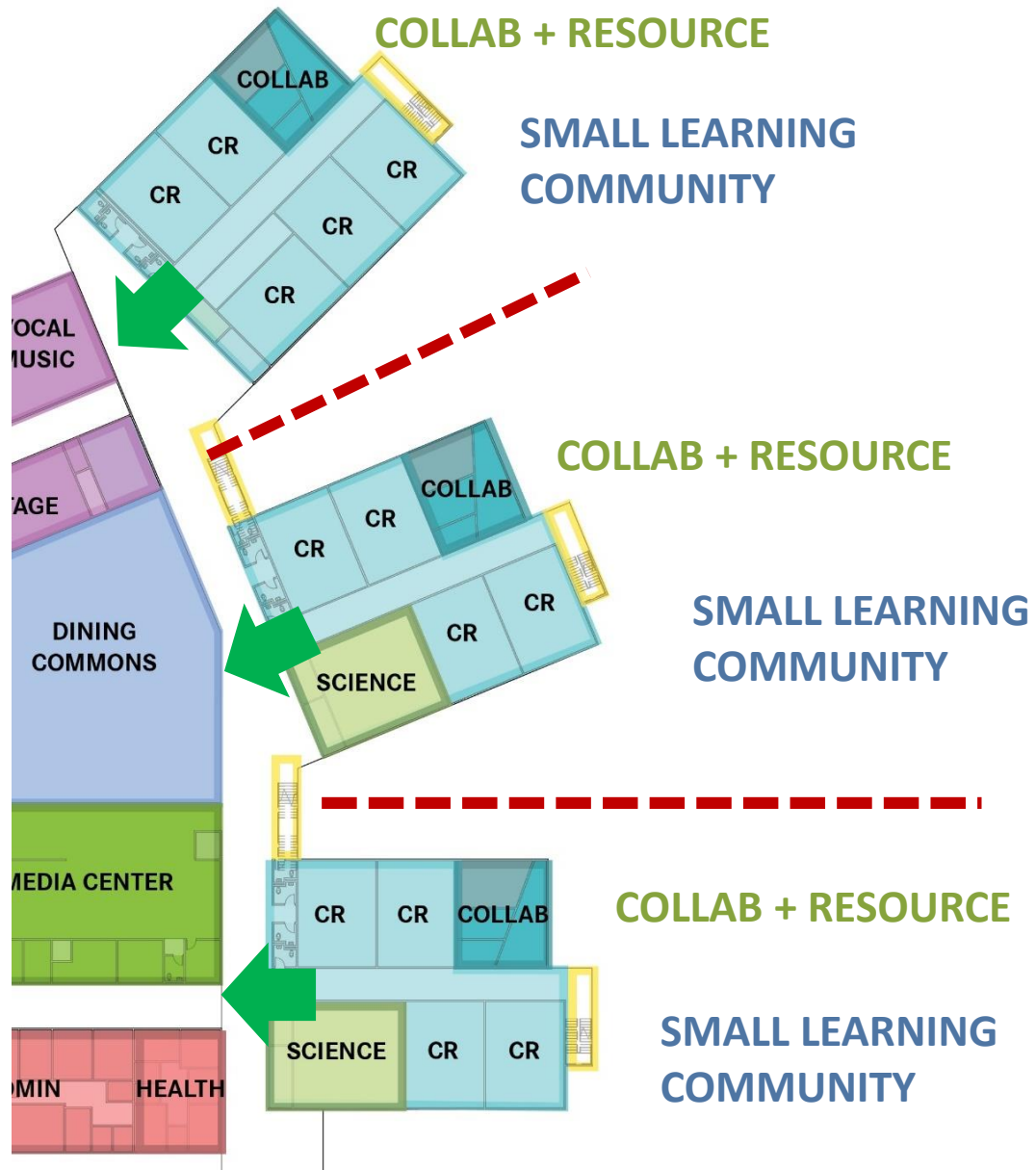


Site Option 1

Site Option 2

Cluster Scheme

ACADEMIC WING



CLUSTER SCHEME

- 1 floor per grade
- 3 SLC clusters
- Distinct identities for each cluster
- Suits interdisciplinary model
- Not as flexible for team sizes



CASCADE

Cascade Scheme

Original Site Plan



Cascade Scheme

Site Option 1

Bus Entrance

Flintridge Drive

Car Entrance

Gallatin Street

- Academic wing closer to trees
- Path for walkers thru parking
- Fields across bus loop



Cascade Scheme

Site Option 2

Bus Entrance

Flintridge Drive

Car Entrance

Gallatin Street

- Academic wing closer from trees
- Path for walkers between bus + parking
- Fields across bus loop



Cascade Scheme

Site Option 3

Bus Entrance

Gallatin Street

Car Entrance

Flintridge Drive

- Requires retaining walls for bus loop
- Academic wing further from trees
- Path for walkers thru parking
- Fields close to gym



Cascade Scheme

Level 0



Cascade Scheme

Level 1

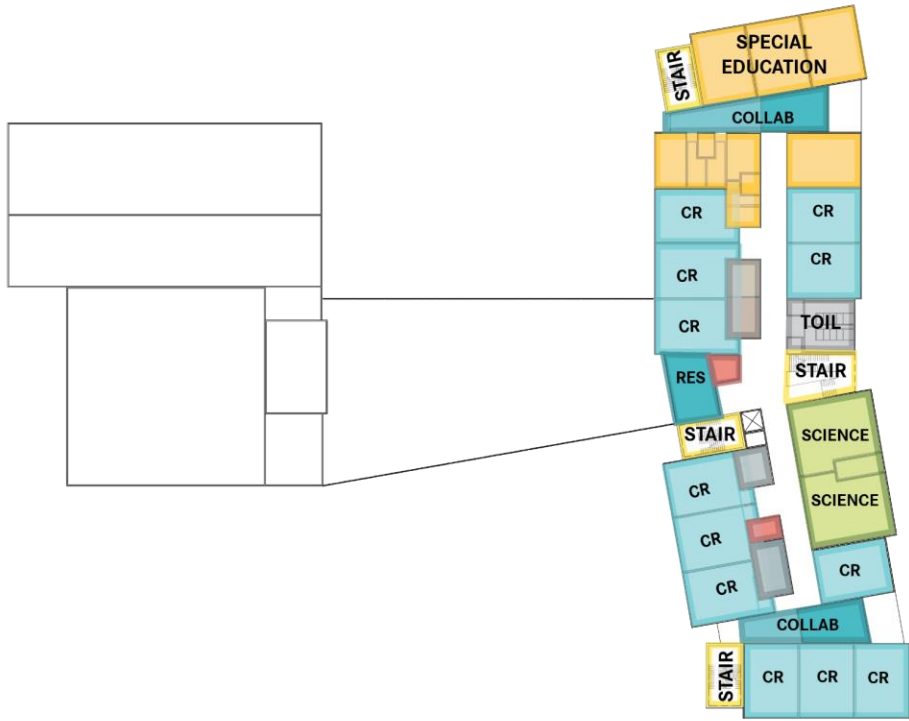


Cascade Scheme

Level 2



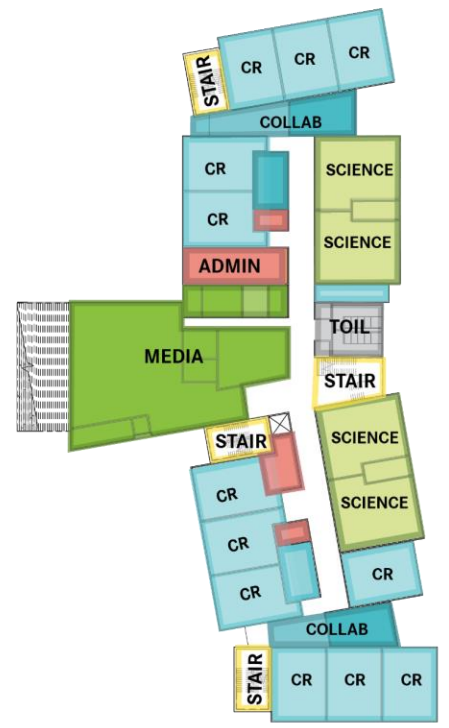
Cascade Scheme



Level 2



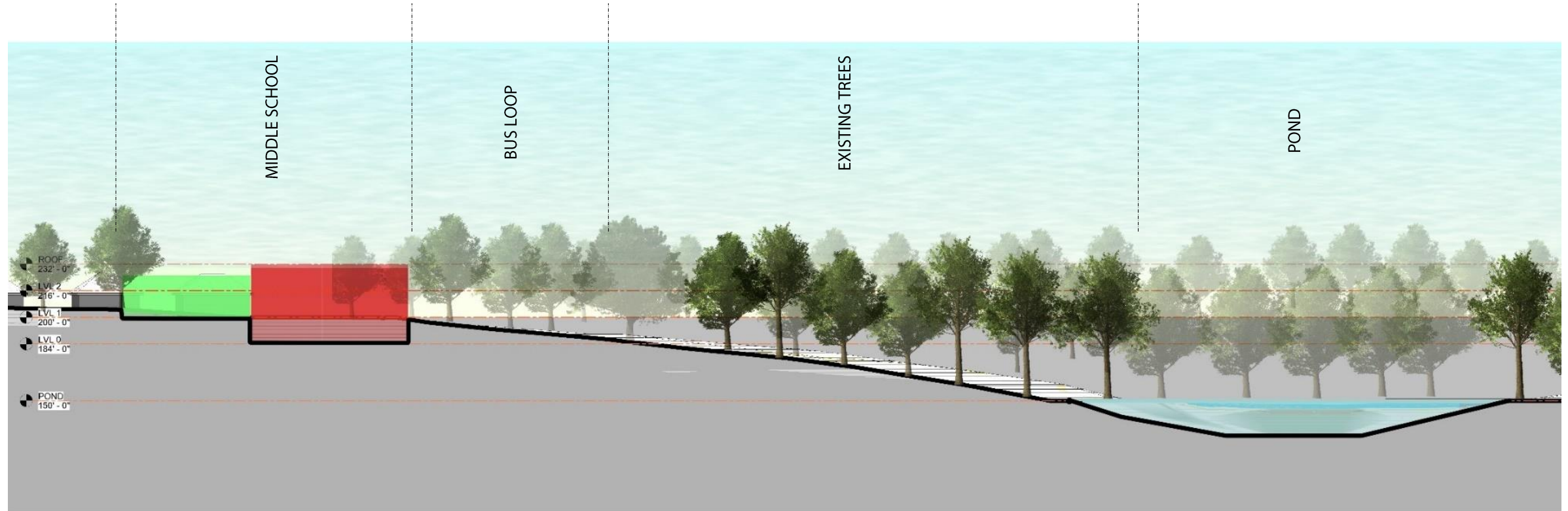
Level 1



Level 0

Cascade Scheme

SECTION



Section 2
1" = 30'-0"

Cascade Scheme

Site Options

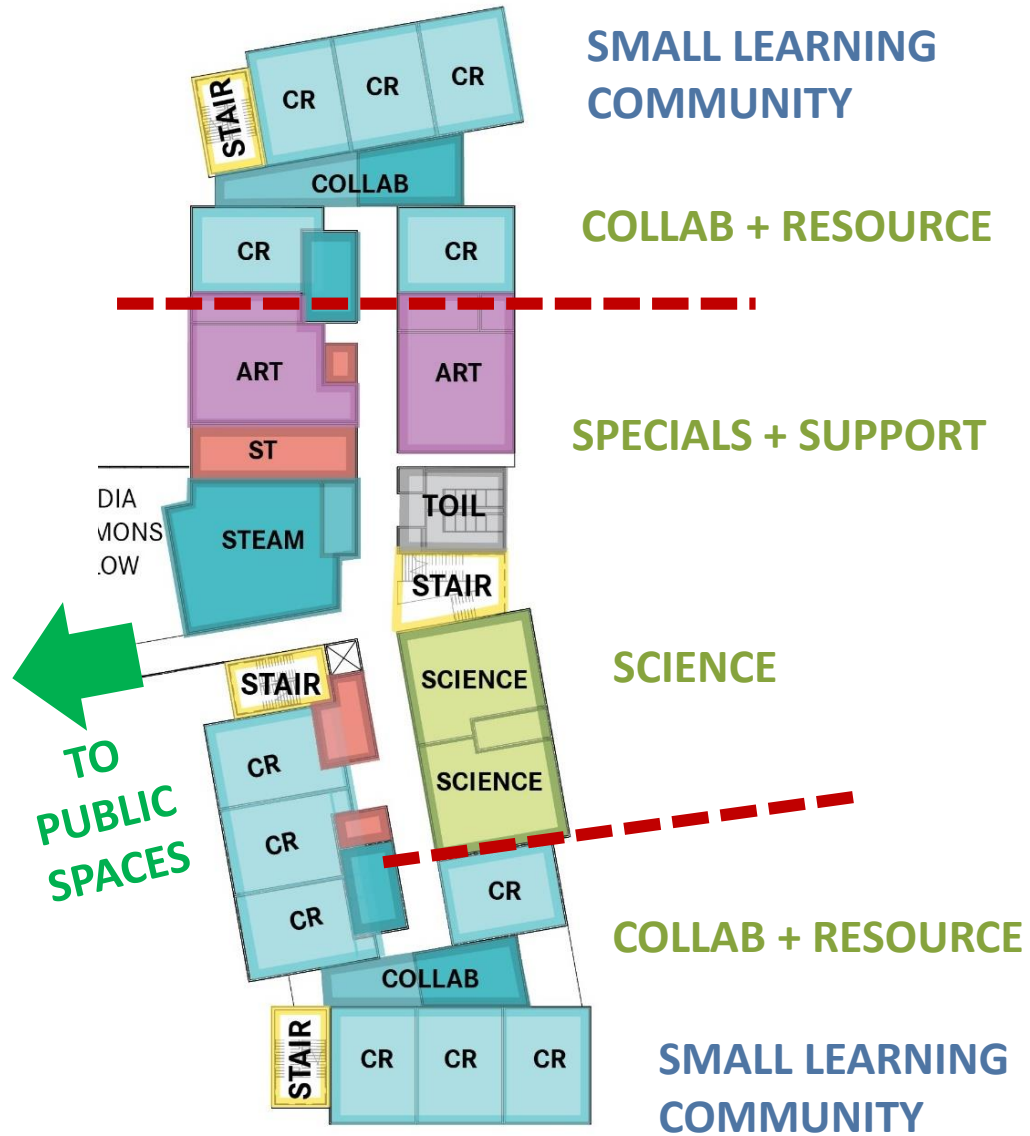


Site Option 1

Site Option 2

Cascade Scheme

ACADEMIC WING



CASCADE SCHEME

- 1 floor per grade
- 2 SLC clusters
- Less defined clusters
- Shared collaboration spaces
- Allows for flexibility in team size
- Private location @ ends of wings

Bar Scheme

AREA COMPARISON



CASCADE



BAR

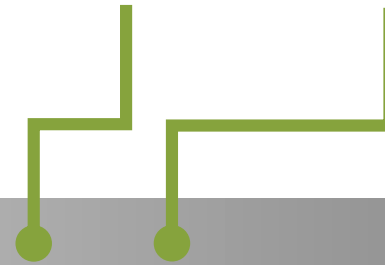
CLUSTER

CURRENT AREA TARGET

ORIGINAL AREA TARGET



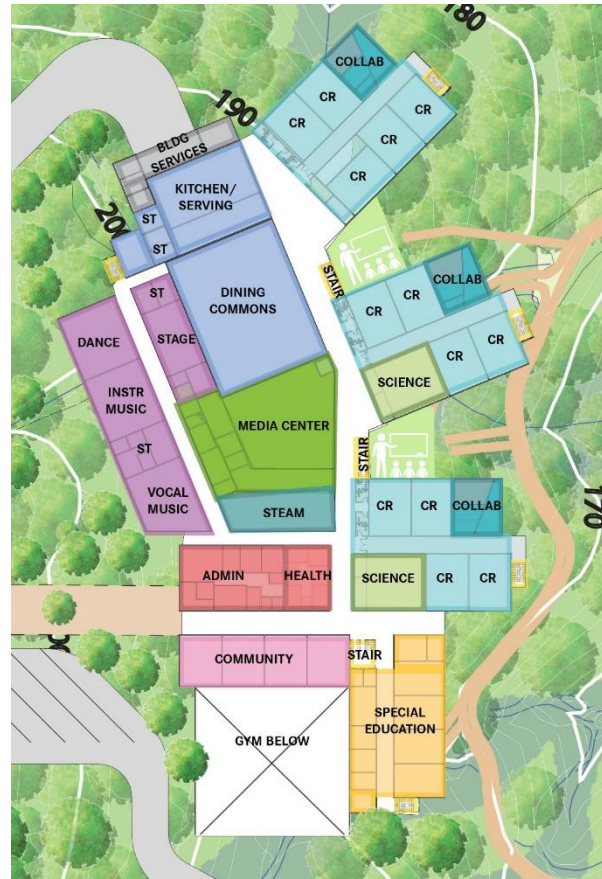
REDUCTION FROM
PROGRAM VERIFICATION



Design Concepts - Analysis



BAR



CLUSTER



CASCADE

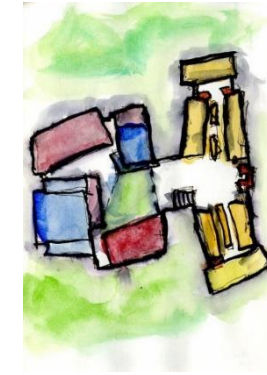
Design Concepts - Analysis



BAR



CLUSTER



CASCADE

SITE ACCESS	Bus – Gallatin Car - Flintridge	Bus – Flintridge/Gallatin Car – Gallatin/Flintridge	Bus – Flintridge Car - Gallatin
MASSING	Compact footprint 4-story bar	2-story public + 3-story academic	1-story public + 3-story academic
ACADEMIC WING	1 floor per grade 3 adjacent SLCs	3 clusters per grade 3 distinct SLCs	1 floor per grade 2 SLCs at ends of wings
COMMON SPACES	Separate Dining and Media	Combined Dining and Media	Terraced Dining and Media

Design Concepts - Analysis



BAR

+ PROS

- Compact footprint minimizes park impact
- Efficient 3-story academic wing
- Separate entrances for cars + busses
- Defined SLC clusters, but not as private

- CONS

- 4-story building: access + supervision
- Solar orientation not ideal
- Building close to neighbors to N+S
- Larger overall building area



CLUSTER

+ PROS

- Academic clusters oriented with contours
- Central combined dining/media commons
- Better solar orientation for clusters

- CONS

- Gym more remote from fields
- Academic wing proximity to commons
- Largest overall building area



CASCADE

+ PROS

- Separation of academic wing and public spaces
- Dining commons and media connected but separate levels
- Learning stair @ media
- Private location for classrooms
- Smallest overall building area

- CONS

- Bus loop distance from main entrance
- Solar orientation not ideal
- Academic clusters not as defined

Next Steps



A serene landscape featuring a calm pond in the foreground, surrounded by tall reeds and grasses. In the background, a green lawn leads to a wooden gazebo, with a dense forest of bare trees under a grey, overcast sky.

Q+A

Any questions?

Glenridge Site

Scheme 1 | Bar

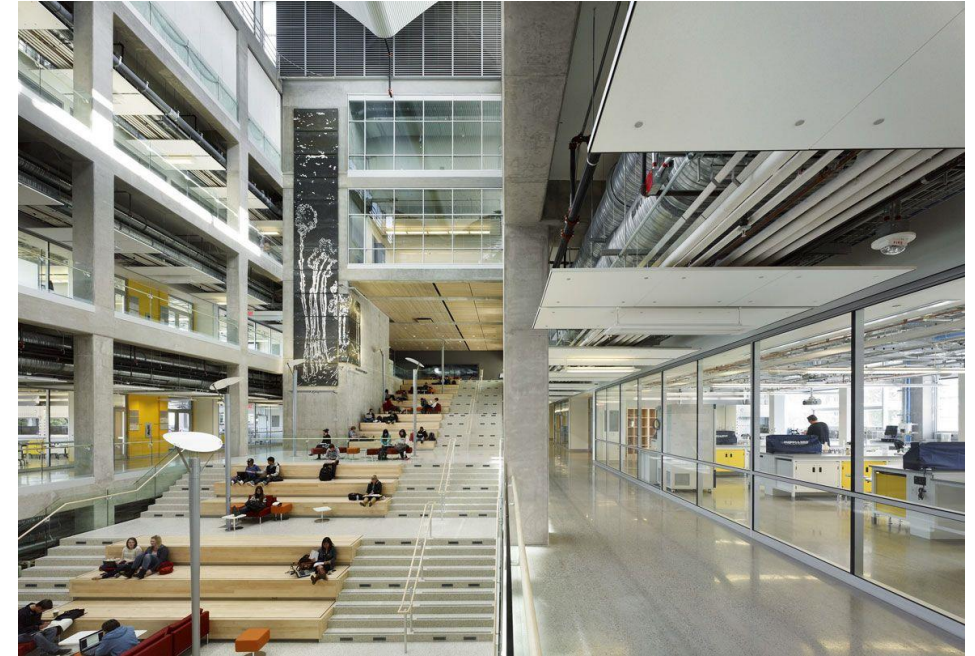
Precedents



Glenridge Site

Scheme 2 | Cascade

Precedents



Glenridge Site

Scheme 3 | Cluster

Precedents



Bar Scheme - Alternate

Level 0



Bar Scheme - Alternate

Level 1



Bar Scheme - Alternate

Level 2



Bar Scheme - Alternate

Level 3

