



The new **Glenridge Area Middle School**

Design and Construction Update Town Hall
Thursday, December 9, 2021 6:00-7:00pm





Welcome

Will Smith
Project
Management
Supervisor, PGCPS
Department of
Capital Programs



**The Honorable
Danielle Glaros,**
County Council
Member



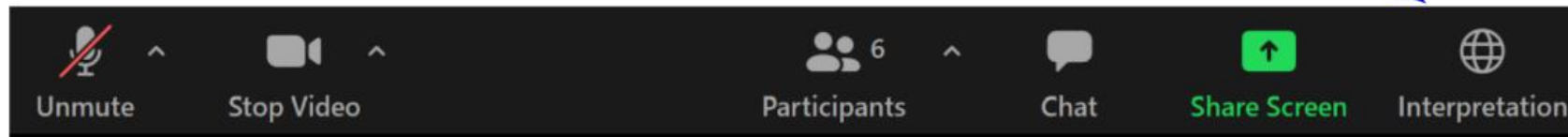
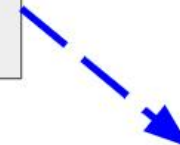


Interpretation and Translation

Karen Summerville,
Communications & Engagement

SERVICIOS DE INTERPRETACIÓN *INTERPRETING SERVICES*

La interpretación simultánea
está disponible en español.
*Simultaneous interpretation is
available in Spanish.*





SERVICIOS DE INTERPRETACIÓN

INTERPRETING SERVICES



On a computer-- At the bottom of the screen will be an interpretation globe. Click that globe and then select *Spanish*.

En una computadora-- En la parte baja de la pantalla habrá un globo de interpretación. Haga clic en ese globo y seleccione "Spanish."



On a mobile device-- At the bottom of the screen, tap the ellipses icon on the bottom right (...).

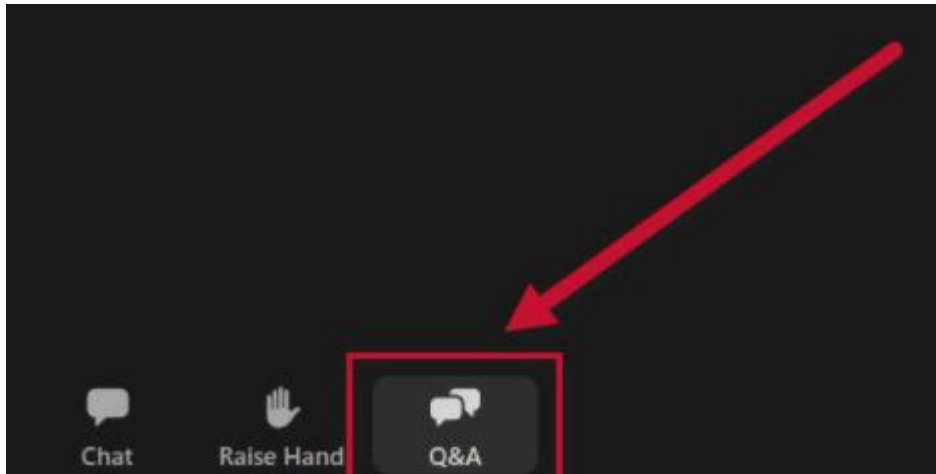
- Tap *Language Interpretation*.
- Tap *Spanish*.

En un dispositivo móvil-- En la parte baja de la pantalla, toca el icono de elipses en la parte baja derecha (...).

- Toque *Language Interpretation*.
- Toque *Spanish*.



Meeting Logistics



We value your input.

- Please submit all questions/concerns in the Q&A area of Zoom.
- Questions and answers from this town hall will be posted on PGCPS Capital Programs New Glenridge Area project profile page.



Agenda



- Welcome and Team Introductions – Will Smith
- Project Overview: Design – Jonathan Hill
- Construction Activity –Rick Munford and Zayd Sharif
- Communication and Engagement – Hiwot Haileselassie
- Q&A – Will Smith



Team Introductions



Will Smith

Project Management
Supervisor, PGCPD Department
of Capital Programs



Hiwot Haileselassie

Senior Project Manager,
PGCPD Department of
Capital Programs



Frank Lefler

Project Executive, MCN Build



Jonathan Hill

Grimm + Parker



Zayd Sharif

Project Manager, MCN Build



Rick Munford

Preconstruction Manager, MCN Build



Project Overview: Scope

The new Glenridge Middle School will...

... provide resources and *spaces for students to thrive* and achieve their goals

... become a *community hub* that is open and accessible to its diverse neighborhood

... integrate with its Glenridge Park setting and *connect with nature*

... be *welcoming and inviting to all* students, parents, staff and neighbors

... enhance a *sense of pride* in the community

... be a *school in the park*

Scope: Construction of a **new 157,851 SF** and **1,200 SRC (State-rated capacity)** middle school in the Glenridge area to alleviate current overcrowding in neighboring schools and meet the demands of projected enrollment.



Project Overview: The Site



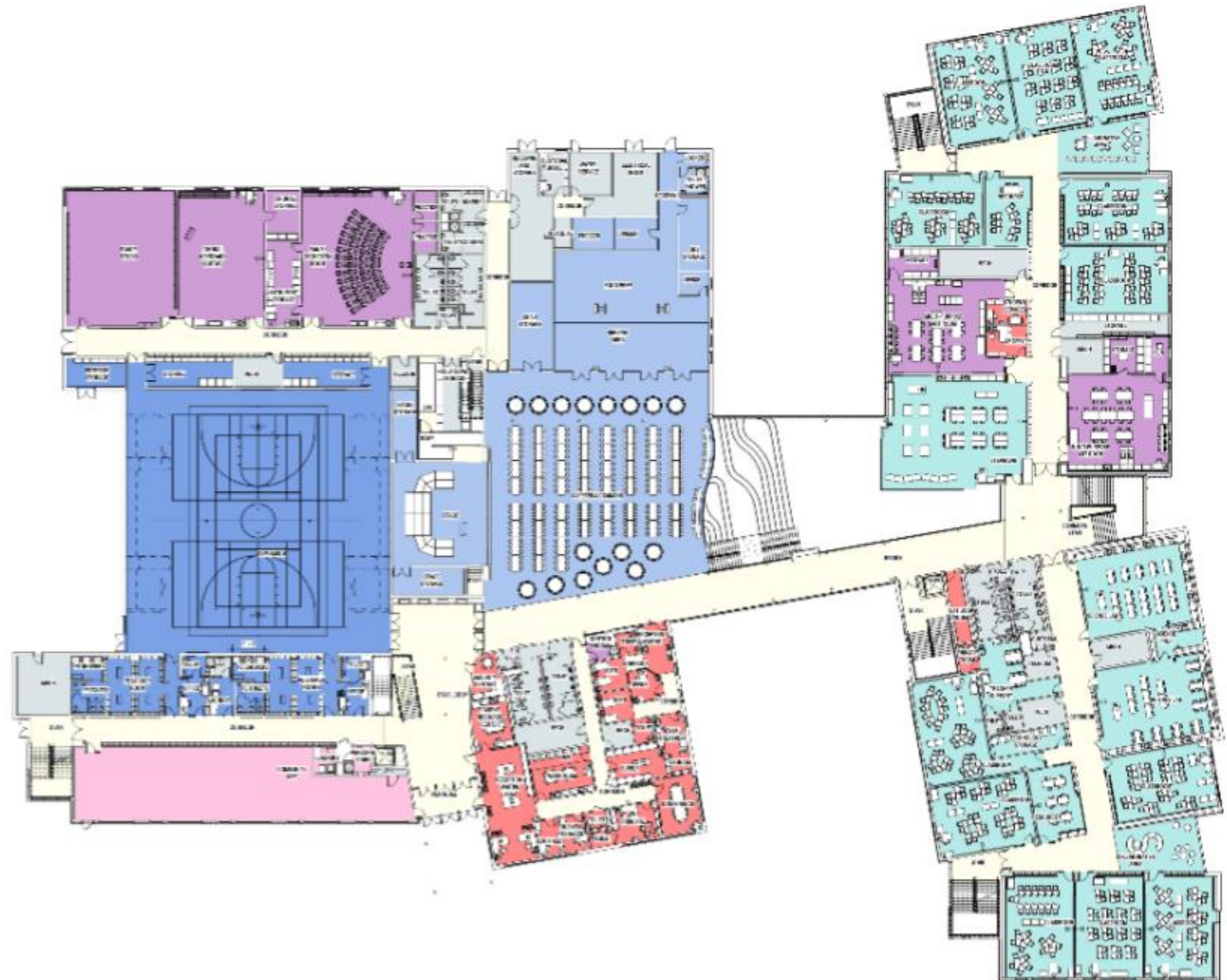


Project Overview: Floor Plans

Main Level Plan

DEPARTMENT LEGEND

- ADMINISTRATION & STUDENT SUPPORT
- ACADEMIC CLUSTERS
- SPECIAL EDUCATION
- RELATED ARTS
- LIBRARY MEDIA CENTER
- PHYSICAL EDUCATION & COMMUNITY USE
- CAFETERIA
- BUILDING SUPPORT
- CIRCULATION





Project Overview: The Building

Lower Level Plan

DEPARTMENT LEGEND

- ADMINISTRATION & STUDENT SUPPORT
- ACADEMIC CLUSTERS
- SPECIAL EDUCATION
- RELATED ARTS
- LIBRARY MEDIA CENTER
- PHYSICAL EDUCATION & COMMUNITY USE
- CAFETERIA
- BUILDING SUPPORT
- CIRCULATION





Program Overview: The Building

Upper Level Plan

DEPARTMENT LEGEND

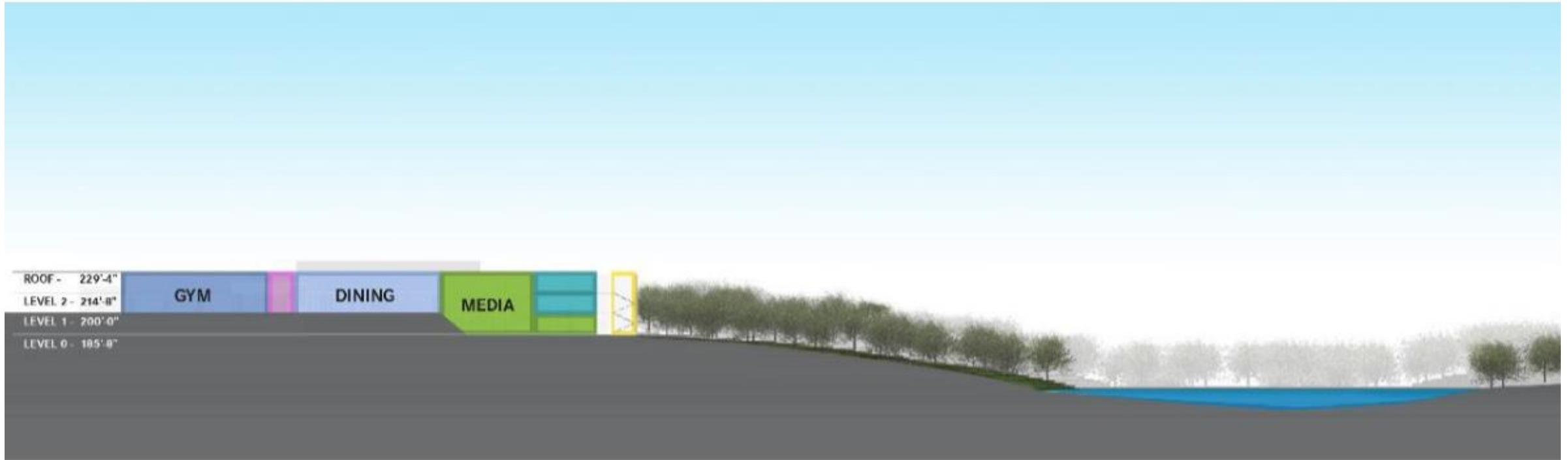
- ADMINISTRATION & STUDENT SUPPORT
- ACADEMIC CLUSTERS
- SPECIAL EDUCATION
- RELATED ARTS
- LIBRARY MEDIA CENTER
- PHYSICAL EDUCATION & COMMUNITY USE
- CAFETERIA
- BUILDING SUPPORT
- CIRCULATION





Project Overview: Design

Cascade Scheme SECTION





The School in the Park





The School in the Park





South Classroom Bar





Student Commons View





Student Commons View





North Courtyard





Project Overview: Construction Activity – MCN Introduction

2007
*year
founded*

107
employees

150+
educational projects

6M+
*SF of K-12 space
build*



Project Overview: Construction Activity – MCN Introduction

We are a purpose driven construction company dedicated to serving our community with sustainable projects.





Project Overview: Construction Activity

Schedule Highlights:

- Earthwork Activities Early 2022
- Building Concrete Work in 2022
- Structural Steel starting in late 2022
- Enclose Building through mid 2023
- Gallatin Street Extension mid 2023
- Final Site Grading late 2023
- Building Finishes and Landscaping late 2023, early 2024
- Final Completion and Building Closeout 2024

Vehicular Traffic

- Delivery vehicles/trucks to adhere to all local ordinances
- Trucks to utilize major roads and use most direct route into project site
- Main project entrance to be through intersection of Freeport Street and Flintridge Drive
- Alternate, secondary site entrance at the end of Greenland Street

Work hours will always follow the specific allowable times for specific operation. Appropriate notice to be provided for activities that will disturb the neighborhood.



Communication and Engagement



- On-going project updates
 - Quarterly newsletters
 - Bi-annual town halls
- Construction notifications/ updates
- On-site construction camera w/ timelapse component
- On-going Q&A opportunities – email us at capital.programs@pgcps.org



South Classroom Bar



Q&A

Thank you for participating!