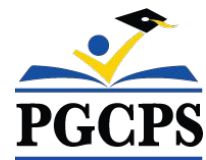




PGCPS . **ENGAGER . CONCEVOIR . CONSTRUIRE . COMMUNIQUER** . PGCPS



# ÉCOLE PRIMAIRE DUCKWORTH

RÉUNION COMMUNAUTAIRE #1 | 8 MAI, 2024, 19h30



## SERVICIOS DE INTERPRETACIÓN *INTERPRETING SERVICES*

La interpretación simultánea  
está disponible en español.  
*Simultaneous interpretation is  
available in Spanish.*



# SERVICIOS DE INTERPRETACIÓN

## *INTERPRETING SERVICES*



**On a computer**-- At the bottom of the screen will be an interpretation globe. Click that globe and then select *Spanish*.

**En una computadora**-- En la parte baja de la pantalla habrá un globo de interpretación. Haga clic en ese globo y seleccione "Spanish."



**On a mobile device**-- At the bottom of the screen, tap the ellipses icon on the bottom right (...).

- Tap *Language Interpretation*.
- Tap *Spanish*.

**En un dispositivo móvil**-- En la parte baja de la pantalla, toca el icono de elipses en la parte baja derecha (...).

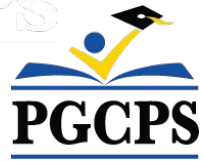
- Toque *Language Interpretation*.
- Toque *Spanish*.



## Votre opinion compte.

- Veuillez saisir vos questions/commentaires dans la partie des questions et réponses de Zoom.
- Les questions et les réponses de cette réunion publique seront publiées sur [pgcpsblueprintschools.com](http://pgcpsblueprintschools.com).





## **Notre engagement**

PGCPS agit promptement pour offrir des environnements d'apprentissage sûrs, modernes et durables à nos élèves, enseignants et communautés.



## Agenda

- Présentations de l'équipe
- Conception
- Calendrier et Logistique de la construction
- Questions et Réponses



# Présentations des équipes

## PGCPS

- **Dr Janice Briscoe**, *Directrice pédagogique*
- **Dr Carletta Marrow**, *Surintendante adjointe*
- **Dr Selena Swilling**, *Directrice (James E Duckworth)*

## Département des programmes d'investissement de PGCPS

- **Shawn Matlock**, *Directeur, Bureau de la planification et du développement des infrastructures alternatives*



# Présentations des équipes



**Jeff Barr**  
PLENARY  
Registered Representative

**Hafeez Habib**  
PLENARY  
Equity Members' Lead Project Manager

**Brett Sullivan**  
PLENARY  
Associate

**Adam Dunn**  
PLENARY  
Assistant Project Manager

**Jeremy Ebie**  
PHOENIX  
Equity Members' Project Manager

**Rob Summers**  
PHOENIX  
Operating Partner

**Peter Bullen**  
ELLISDON CAPITAL  
Senior Director



**Bill Beschoner**  
MCN  
Construction Process Executive in Charge

**Bassem Boustany**  
MCN  
Principal

**Yonas Menji**  
MCN  
Lead Construction Manager

**Rick Munford**  
MCN  
Preconstruction Director



**Sean O'Donnell**  
PERKINS EASTMAN  
Design Process Executive In Charge & Lead Architect

**Omar Calderon**  
PERKINS EASTMAN  
Design Principal



**Pete Cambell**  
ELLISDON FS  
Director, P3 Pursuits

**Brandon Kelley**  
USF  
Vice President

**Johnathan Bolden**  
RSC  
President



**Sharon Bradley**  
BSD  
Le Directeur

**Ivan Zapata**  
BSD  
Directeur du génie civil

**Matthew Cartledge**  
BSD  
Chef de projet/ Architecte paysagiste









**Jam Kendrick**  
TB&A  
Responsable de projet





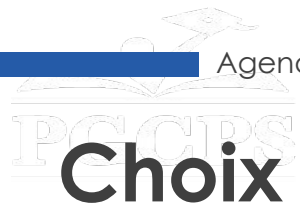
# Plan du site proposé

**MATERIALS LEGEND**

-  PROPERTY LINE
-  CONCRETE
-  ASPHALT
-  RUBBER PLAY SURFACING
-  LAWN
-  PLANTING AREA
-  EXISTING CANOPY TO REMAIN
-  BIORETENTION; REFER CIVIL FOR DEPTH AND SPECIFICATIONS







# Choix des plantes

## SPRING



WHITE AZALEA  
*Rhododendron x*



HINO CRIMSON AZALEA  
*Rhododendron x*



DAFFODIL  
*Narcissus x*



DRIFT ROSE  
*Rosa hybrida*



GOLDEN RAGWORT  
*Packera aurea*



FOAM FLOWER  
*Tiarella cordifolia*



GIANT ALLIUM  
*Allium Giganteum*



ENGLISH LAUREL  
*Prunus laurocerasus*

## SUMMER



BUTTERFLY MILKWEED  
*Asclepias tuberosa*



BLACK-EYED SUSAN  
*Rudbeckia fulgida*



PENNSYLVANIA SEDGE  
*Carex pennsylvanica*



SNIPPET WIEGELA  
*Wiegela florida*



CORAL BELLS  
*Heuchera micrantha*



FERN MIX  
*Multiple Species*



KODIAK DIERVILLA  
*Diervilla x*



BLUE CASCADE DISTYLIUM  
*Distylium x*

## AUTUMN



GROW LOW SUMAC  
*Rhus aromatica*



ARKANSAS BLUE STAR  
*Amsonia hubrichtii*



FEATHER REED GRASS  
*Calamagrostis x acutiflora*



LITTLE BLUESTEM  
*Schizachyrium scoparium*



SWEETPIRE  
*Itea virginica*



SARGENT JUNIPER  
*Juniperus chinensis sargentii*



FOTHERGILLA  
*Fothergilla gardenii*

## WINTER



PLUM YEW  
*Cephalotaxus harringtonia*



WINTERBERRY  
*ilex verticillata*



GREY OWL CEDAR  
*Juniperus virginiana*



RED TWIG DOGWOOD  
*Cornus sericea*



FOUNTAIN GRASS  
*Pennisetum alopecuroides*



WINTER JASMIN  
*Jasmin nudiflorum*



DRAGON LADY HOLLY  
*Ilex x aquipernyi*





# Images précédentes







# Plan d'aménagement préliminaire

- Salles de classe pour la petite enfance au niveau scolaire.
- Entrée principale
- Au cœur de l'école

**DEPARTMENT**

ACADEMIC - CORE
ACADEMIC - EXTENDED
ADMINISTRATION
BUILDING SERVICES
BUILDING SUPPORT
CIRCULATION
DINING
MEDIA CENTER
PERF ARTS
PHYS ED
SPEC ED
SUPPORT
VISUAL ARTS



Plan du premier niveau

Remarque : Le design est susceptible d'être modifié



# Plan d'aménagement préliminaire

- Salles de classe de niveau supérieur



Plan du deuxième niveau

Remarque : Le design est susceptible d'être modifié





# Élévations et rendus intérieurs



Remarque : Le design est susceptible d'être modifié



# Élévations et rendus



Remarque : Le design est susceptible d'être modifié



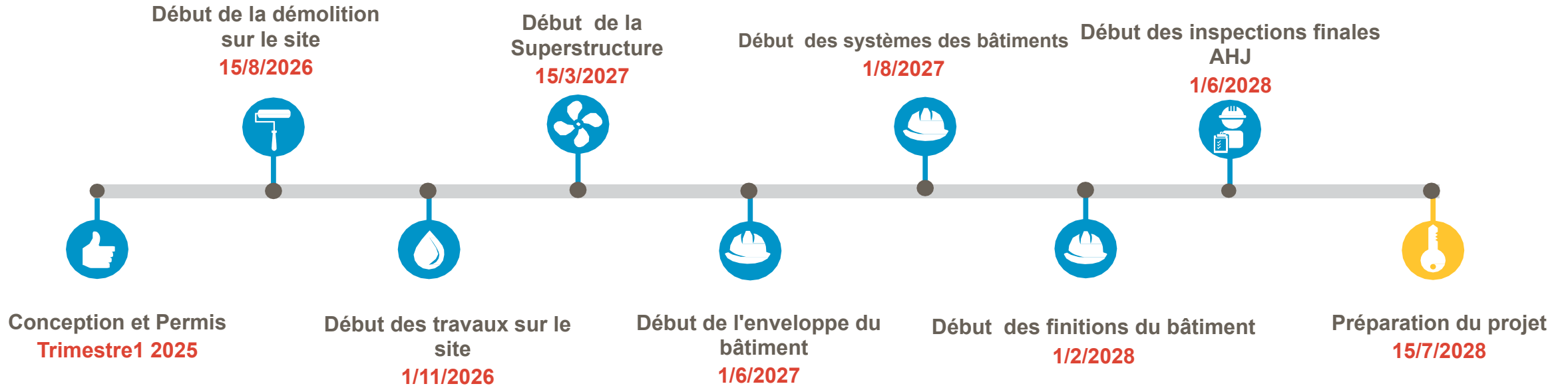
# Élévations et rendus



Remarque : Le design est susceptible d'être modifié



# Aperçu du calendrier



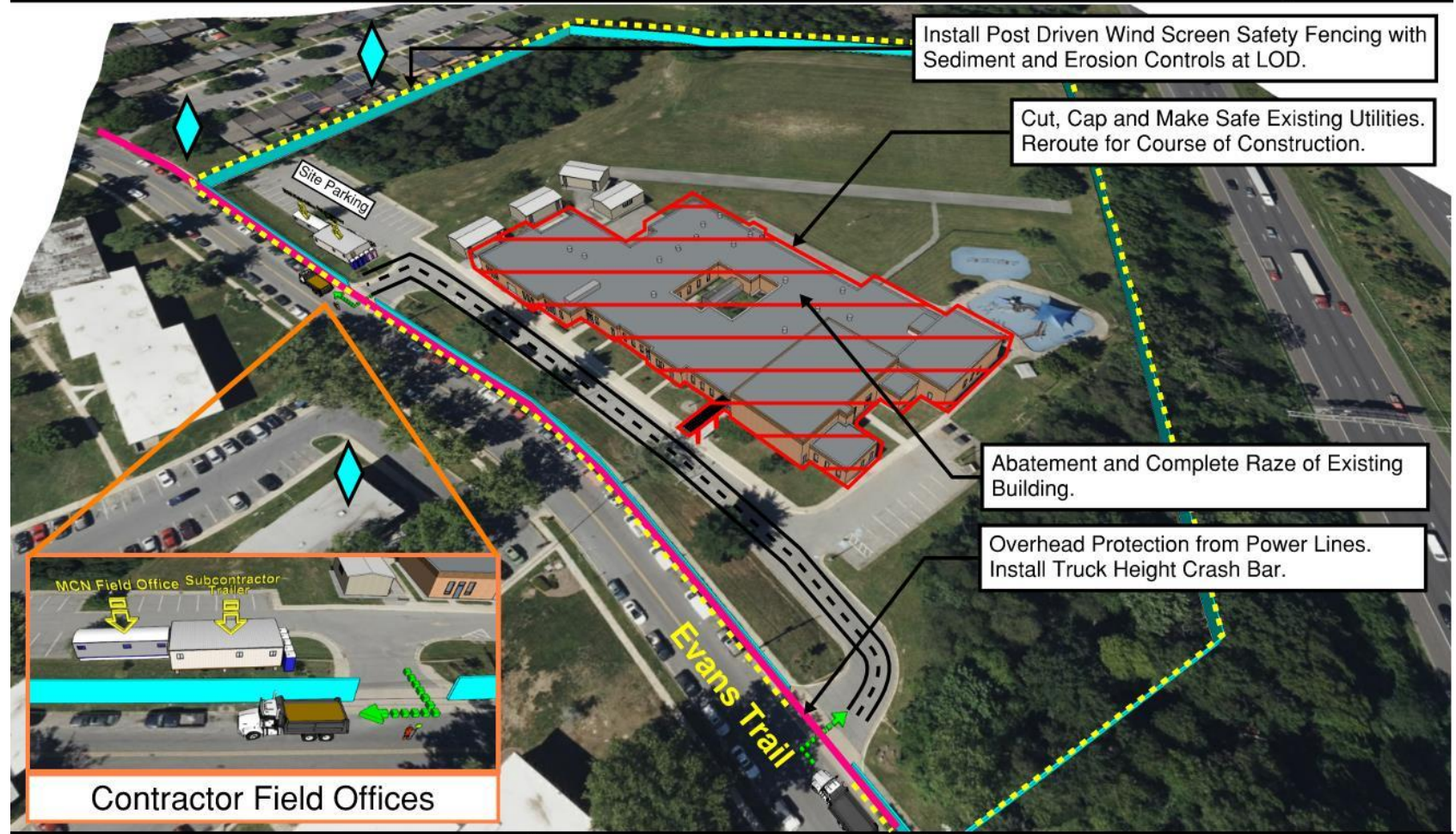




# Plan logistique

## James E. Duckworth ES: New Building Logistic & Phasing Plan

### Sequence 2 - Demolition & Rough Grading



Install Post Driven Wind Screen Safety Fencing with Sediment and Erosion Controls at LOD.

Cut, Cap and Make Safe Existing Utilities. Reroute for Course of Construction.

Abatement and Complete Raze of Existing Building.

Overhead Protection from Power Lines. Install Truck Height Crash Bar.



Contractor Field Offices

- Sequence 1 - Site Controls & LOD (Not Shown)
- Sequence 2 - Demolition & Rough Grading**
- Sequence 3 - Superstructure & Facade
- Sequence 4 - Final Site & Completion

- : Dedicated Flaggers
- : Vibration & Settlement Monitors

Prior to the demolition and rough grading process, MCN will take necessary measures to secure the site by installing safety fencing and implementing sediment and erosion control systems. The existing utilities will undergo a meticulous identification process and be safely cut, capped, and secured. These utilities will be rerouted and repurposed as temporary facilities to facilitate the construction activities.





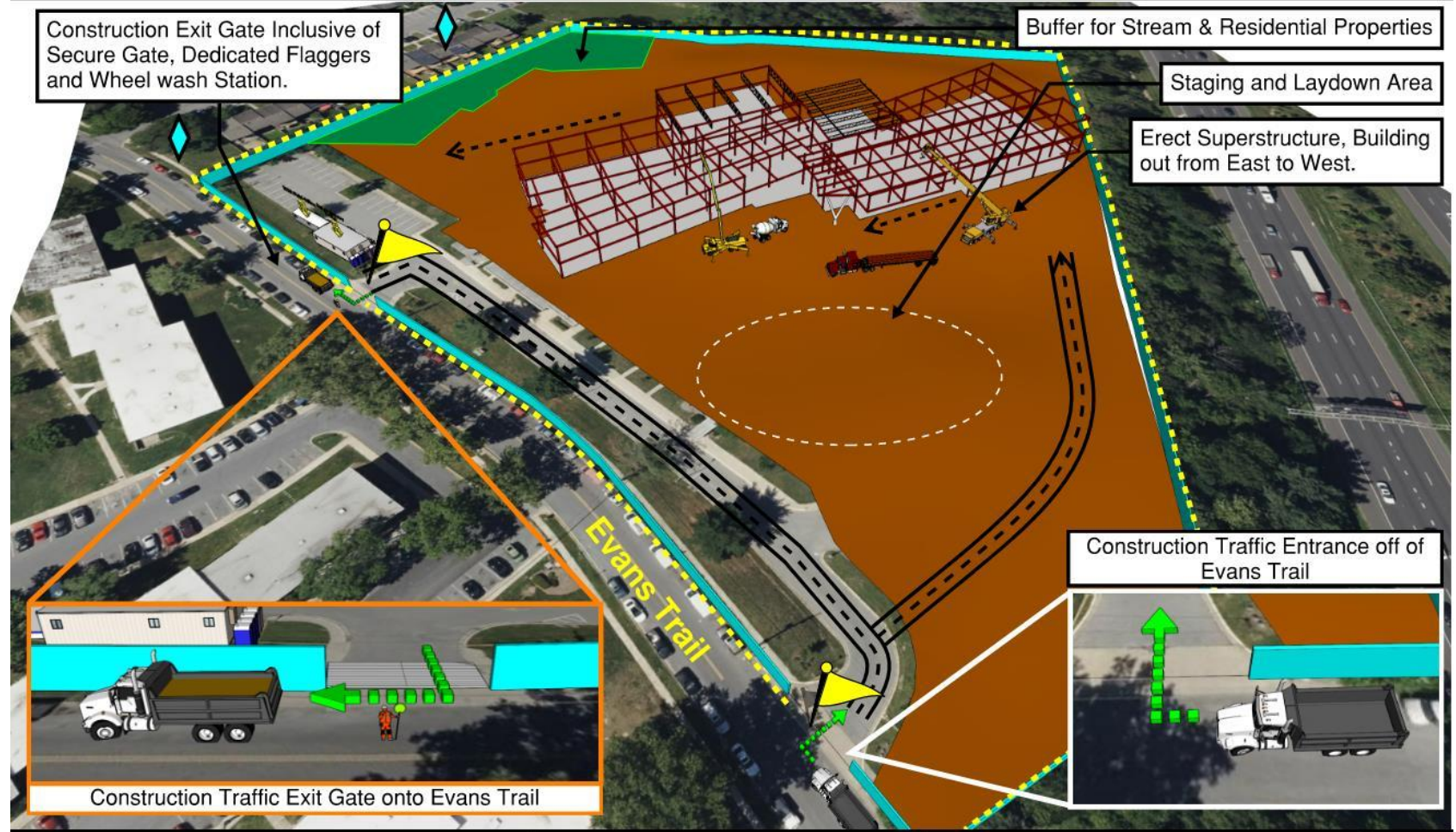


# Plan logistique

## James E. Duckworth ES: New Building Logistic & Phasing Plan



### Sequence 3 - Superstructure & Facade



- Sequence 1 - Site Controls & LOD (Not Shown)
- Sequence 2 - Demolition & Rough Grading
- Sequence 3 - Superstructure & Facade**
- Sequence 4 - Final Site & Completion

- : Dedicated Flaggers
- : Vibration & Settlement Monitors

The new school will be constructed in an unobstructed area within the existing site. The construction activities will be carefully situated at an ample distance from neighboring properties, ensuring that excessive vibration and noise disturbances are prevented during the process.



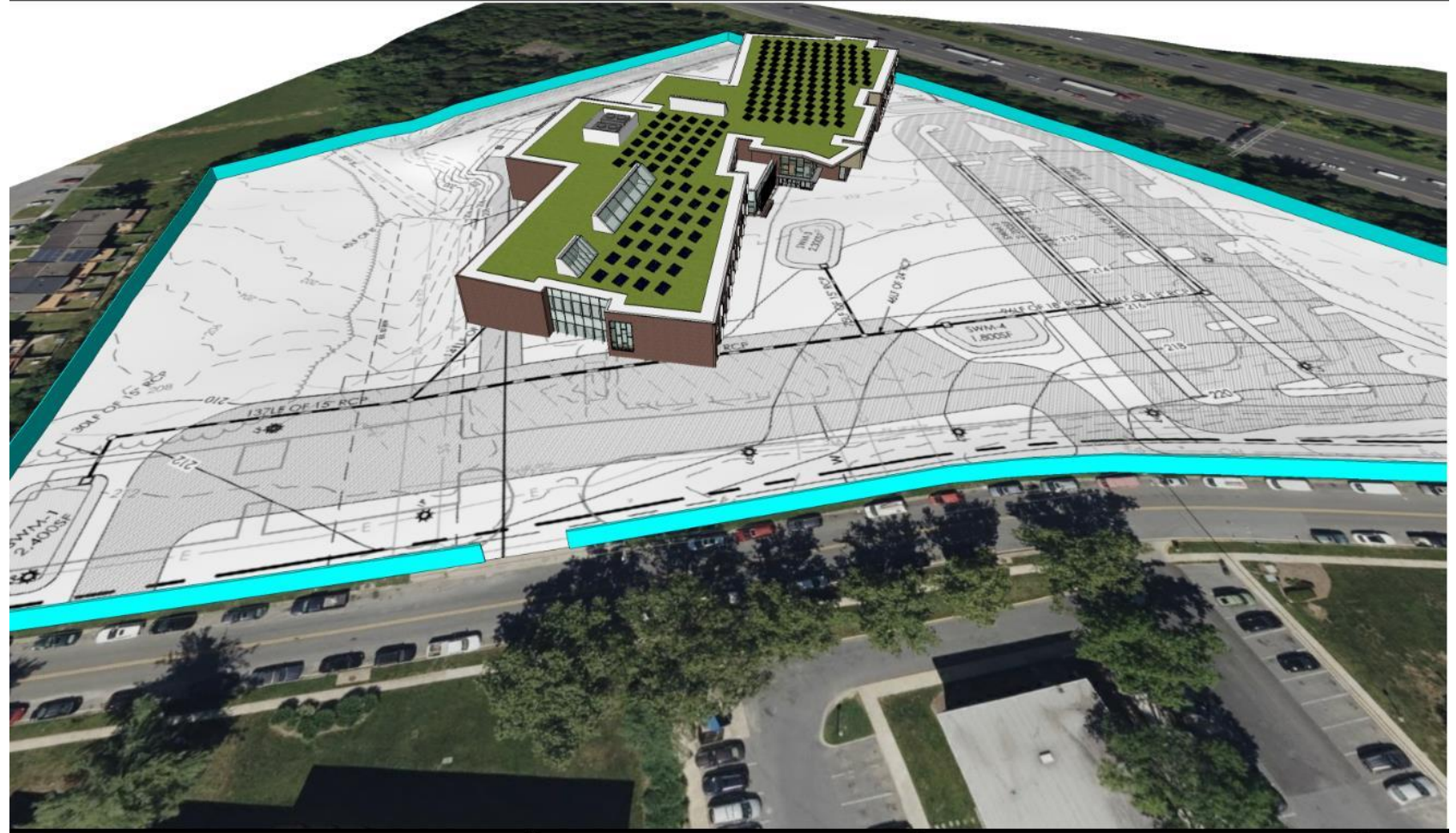




# Plan logistique

## James E. Duckworth ES: New Building Logistic & Phasing Plan

### Sequence 4 - Final Site & Completion



Sequence 1 - Site Controls & LOD (Not Shown)  
 Sequence 2 - Demolition & Rough Grading  
 Sequence 3 - Superstructure & Facade  
**Sequence 4 - Final Site & Completion**

-  : Dedicated Flaggers
-  : Vibration & Settlement Monitors

Upon the completion of the superstructure, the interior construction will begin simultaneously with the site work and the final completion of the interior building will be meticulously coordinated and concluded concurrently.



# Des questions ?