



PGCPS . **ENGAGE . DESIGN . BUILD . COMMUNICATE** . PGCPS

SUITLAND HIGH SCHOOL

PROJECT UPDATE MEETING | SEPTEMBER 24, 5:30 PM



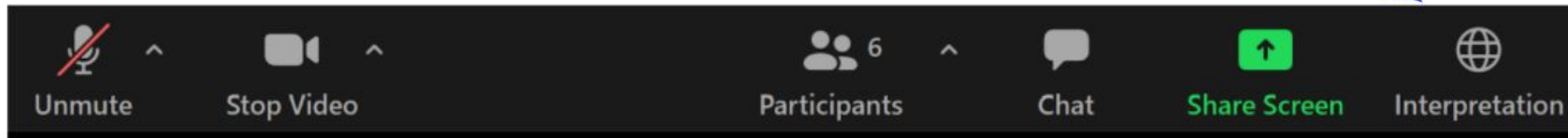
**DEPARTMENT OF
CAPITAL PROGRAMS**
PRINCE GEORGE'S COUNTY PUBLIC SCHOOLS



SERVICIOS DE INTERPRETACIÓN

INTERPRETING SERVICES

La interpretación simultánea
está disponible en español.
*Simultaneous interpretation is
available in Spanish.*



SERVICIOS DE INTERPRETACIÓN

INTERPRETING SERVICES



On a computer-- At the bottom of the screen will be an interpretation globe. Click that globe and then select *Spanish*.

En una computadora-- En la parte baja de la pantalla habrá un globo de interpretación. Haga clic en ese globo y seleccione "Spanish."



On a mobile device-- At the bottom of the screen, tap the ellipses icon on the bottom right (...).

- Tap *Language Interpretation*.
- Tap *Spanish*.

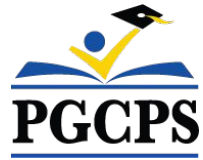
En un dispositivo móvil-- En la parte baja de la pantalla, toca el icono de elipses en la parte baja derecha (...).

- Toque *Language Interpretation*.
- Toque *Spanish*.



We value your input.

- Please type your questions/comments in the Q&A area of Zoom.
- Questions and answers from this town hall will be posted at www.pgcps.org/cip.



Our Commitment

PGCPS is moving swiftly to deliver safe, state-of-the-art, and sustainable learning environments for our students, teachers, and communities.

Through a three-pronged approach, traditional Capital Improvement, Staged Renovations, and the nation's first Public School P3 Design-Build-Maintain approach, otherwise known as the Blueprint Schools Program, we're on track to deliver over 25 modernized school facilities in just 10 years.



Agenda

- Team Introductions
- Project Scope Review
- Project Phasing Review
- Project Timeline
- Construction Update
- Community Engagement
- Q&A

Team Introductions



Dr. Charoscar Coleman
Chief Operating Officer



Jason Washington
Associate Superintendent of Supporting Services



Shayla Jackson
Director Department of Capital Programs



Maurice Wright
Principal, Suitland High School

Team Introductions

 PGCPS Proud Alum!



Will Smith
Project Management Supervisor,
PGCPS Capital Programs

 PGCPS Proud Alum!



Sean Nickols
Project Manager,
PGCPS Capital Programs



Rodney Howlett
AE, Project Manager
cox graae + spack



Carlos Flores
Project Executive,
Turner Construction

 PGCPS Proud Parent!



Latoya Stephens
Project Manager,
Turner Construction

 PGCPS Proud Alum!



Luis Rodriguez
Project Superintendent,
Turner Construction



Frank Johnson
Project Engineer
Turner Construction



Kyra Tyson
Community & Citizenship Manager,
Turner Construction

Project Scope Review



Auditorium Lobby



Learning Spaces



Arts Commons



Dining Commons

Full replacement of the existing 344,875 SF and 2,477 student Suitland High School Campus consisting of Comprehensive High School (CHS), Center for Visual and Performing (CVPA) Arts and Career Technical Education (CTE). **The proposed design is 389,108 sf with a capacity of 1,500 comprehensive and 500 CVPA students.** The new facility will be one new facility with the comprehensive and the CVPA school programs only. The CTE programs will be relocated to Crossland High School for school year 2022 - 2023, which will be designated as the new southern comprehensive CTE school for the county.

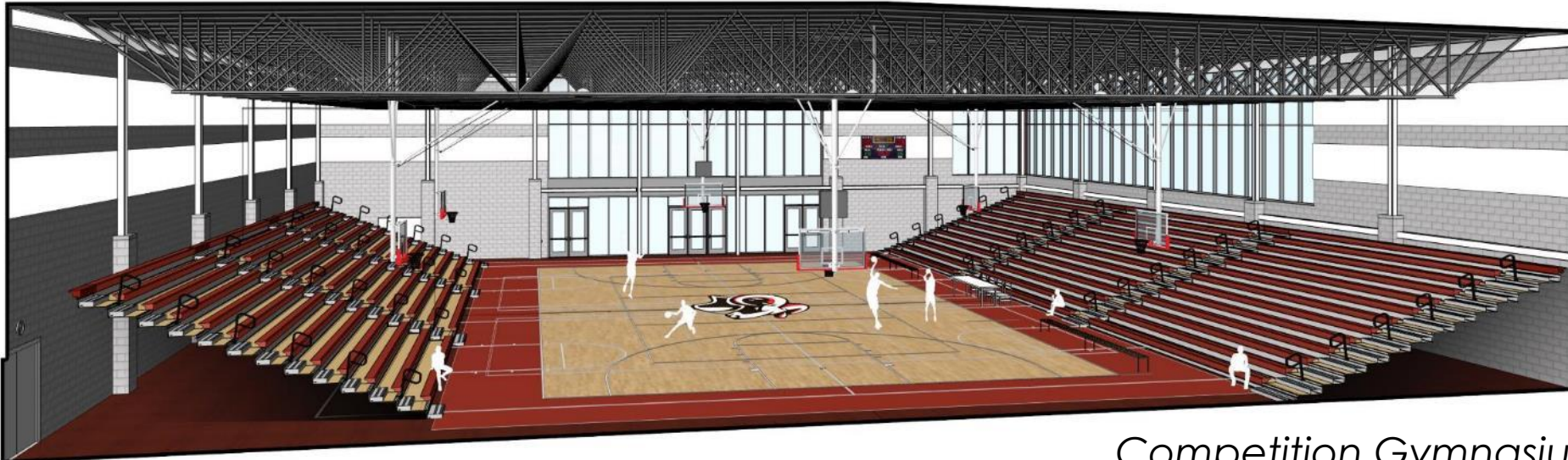
Phase 1 Amenities include:

- School Auditorium
- Competition & Auxiliary Gymnasiums
- Fitness Center & Locker Rooms
- Dining Commons & Food Services
- Media/Library Center
- Classrooms, Laboratories, Computer Labs, Studios
- Band & General Music Program Assembly Spaces and Practice Rooms
- Exterior Learning Terrace and Outdoor Commons

Project Scope Review - Phase 1



Interior View @ Dining Commons



Competition Gymnasium

Project Scope Review - Phase 1

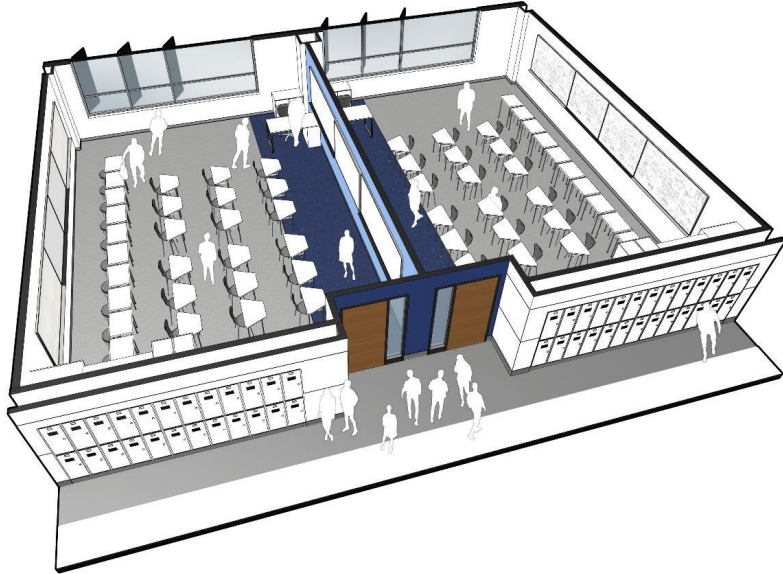


Media Center



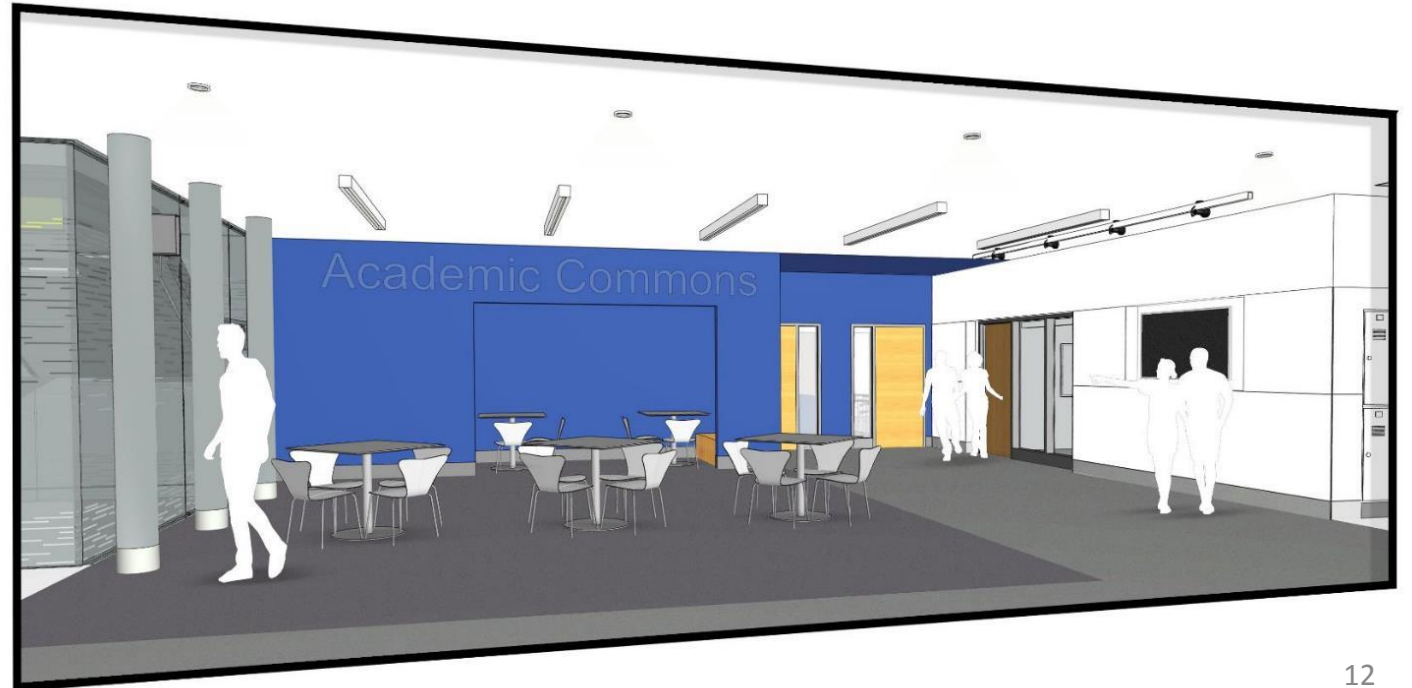
High School Auditorium Lobby

Project Scope Review - Phase 1



Typical Classrooms

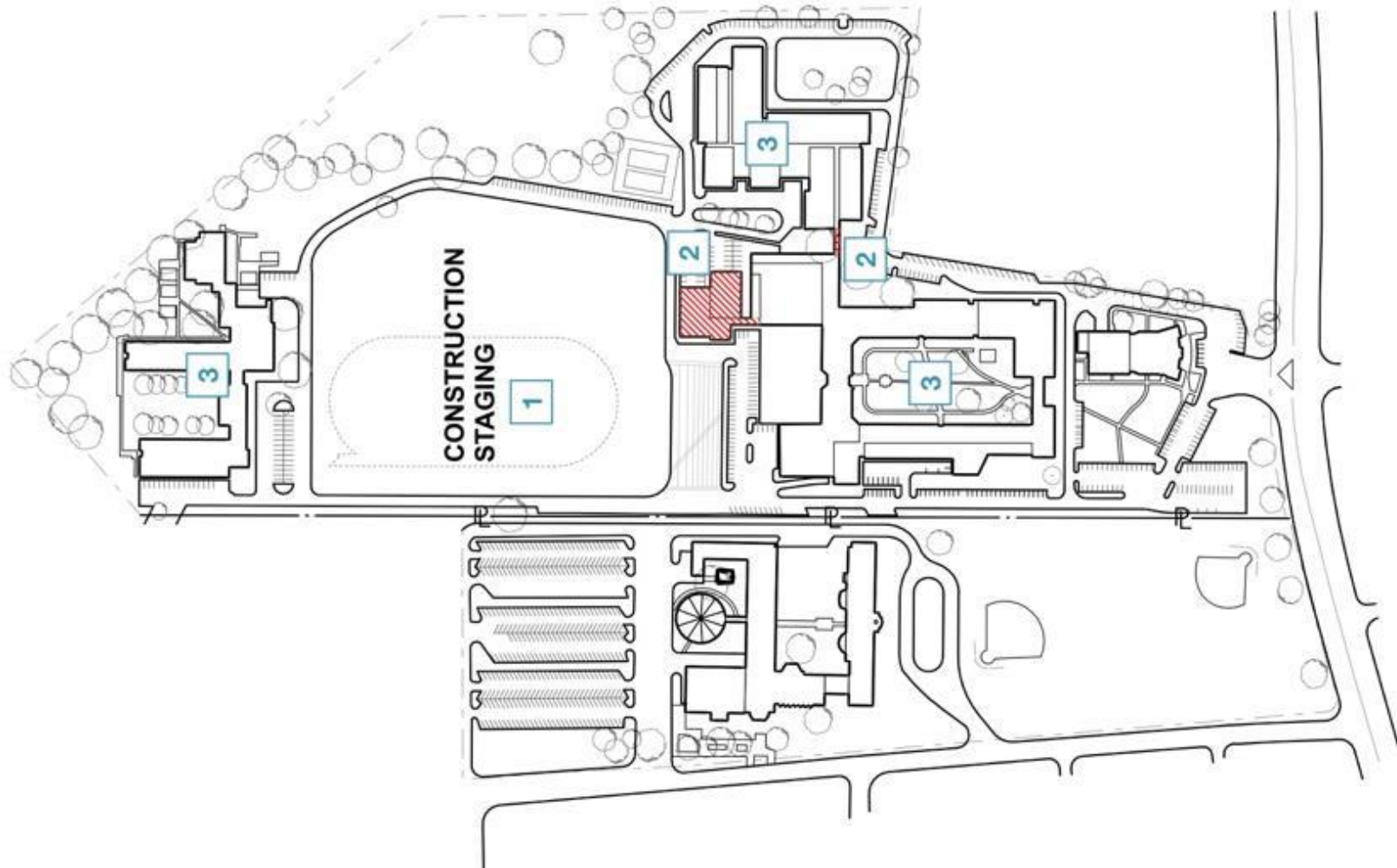
Academic Commons



Project Scope Review - Phase 1



Project Phasing Review



A PHASE 1

- 1** Enclose construction area
- 2** Demolish stadium, girl's gym and locker rooms & connector between CTE and high school
- 3** Students remain in high school, CTE and Annex building during phase 1 construction

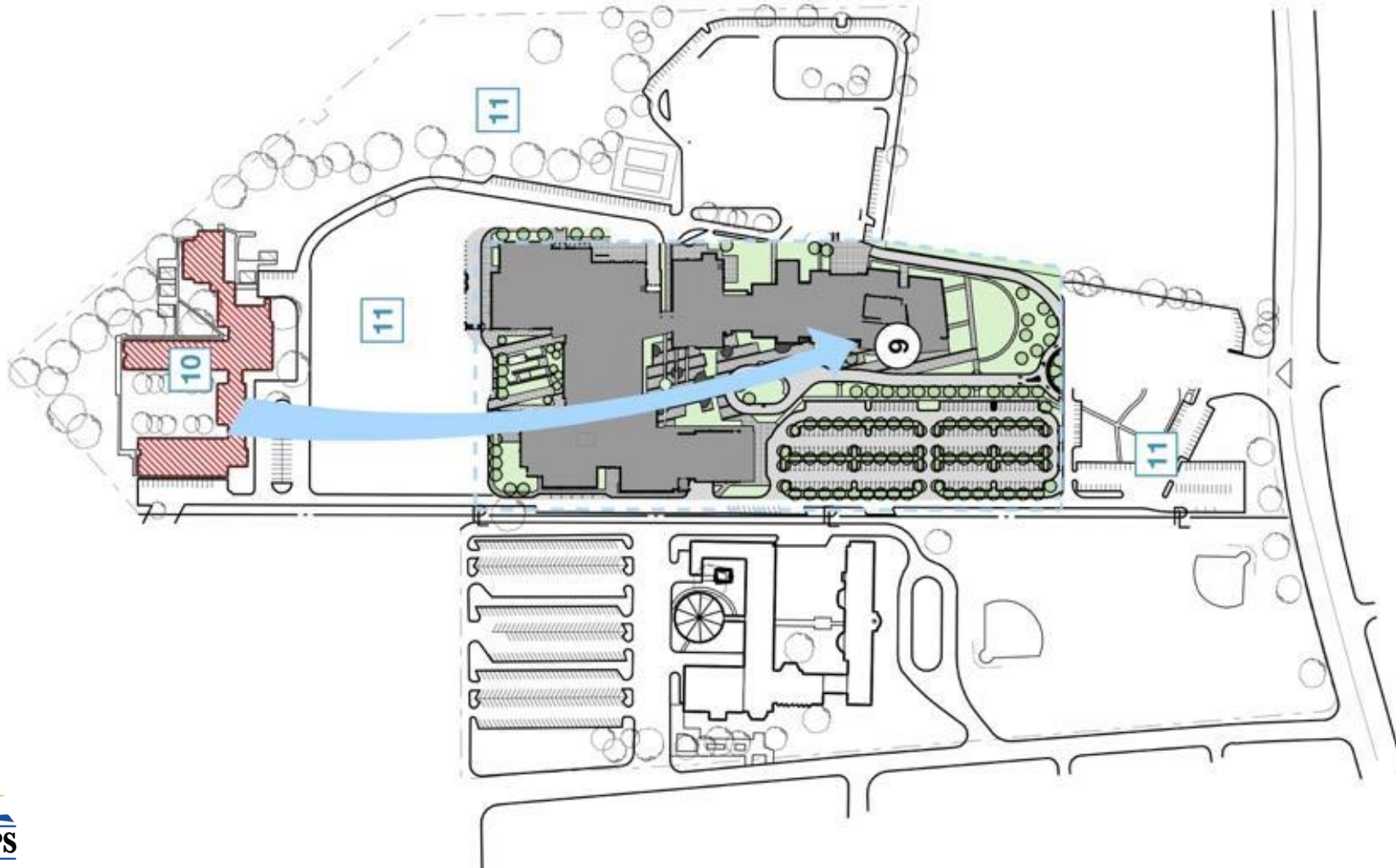
Project Phasing Review



B PHASE 1 & 2

- 4** New high school and shared spaces building completed
- 5** High school students move out of the existing building into new building
- 6** Existing high school, CTE and auditorium is demolished
- 7** CVPA students remain in the Annex
- 8** New CVPA buildings are constructed

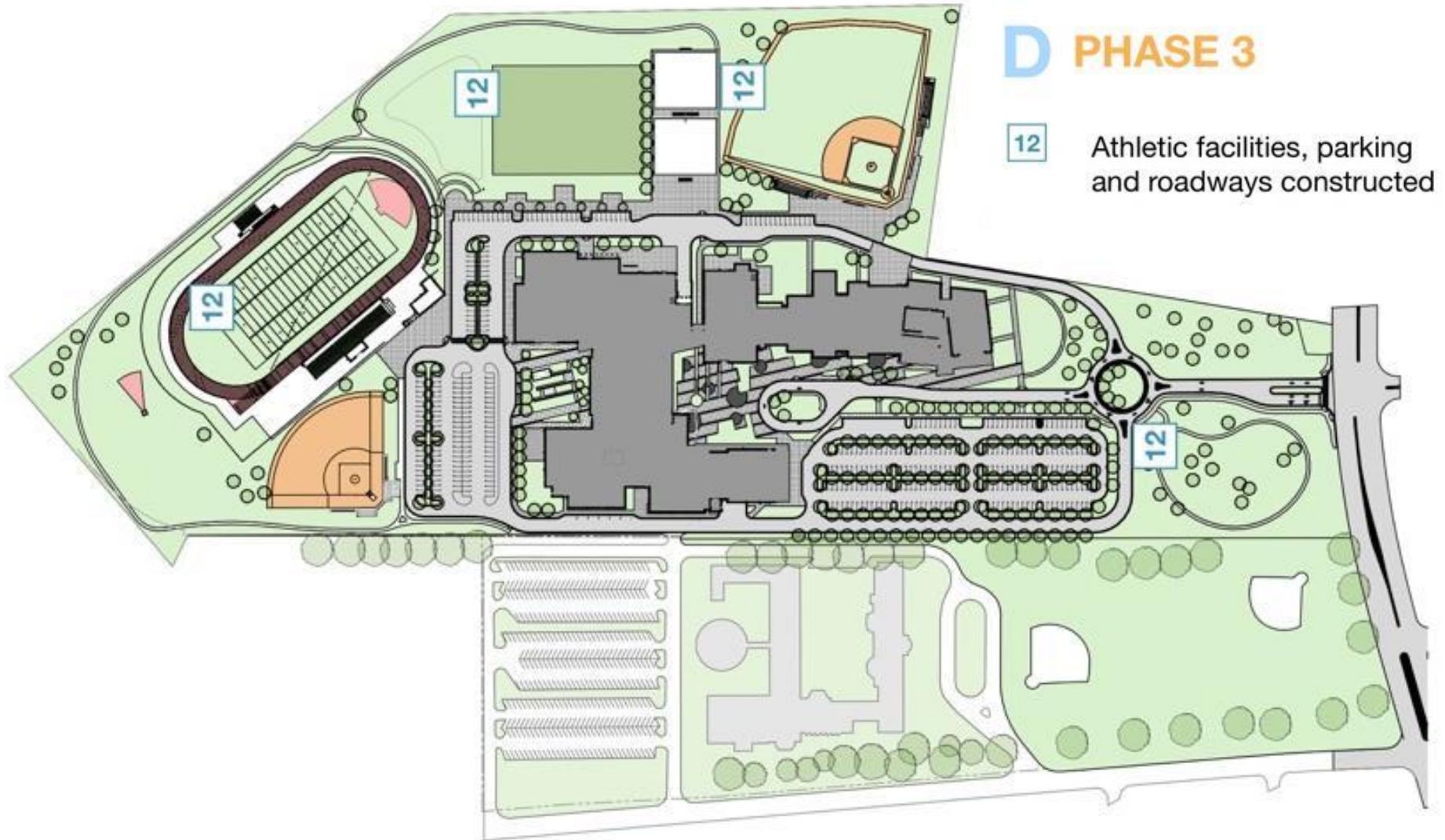
Project Phasing Review



C PHASE 2 & 3

- 9 CVPA students move out of the Annex and into the new facilities
- 10 Annex is demolished
- 11 Remaining site features are removed

Project Phasing Review



Project Timeline



PHASE 1

Construction Update

Last Meeting and This Meeting

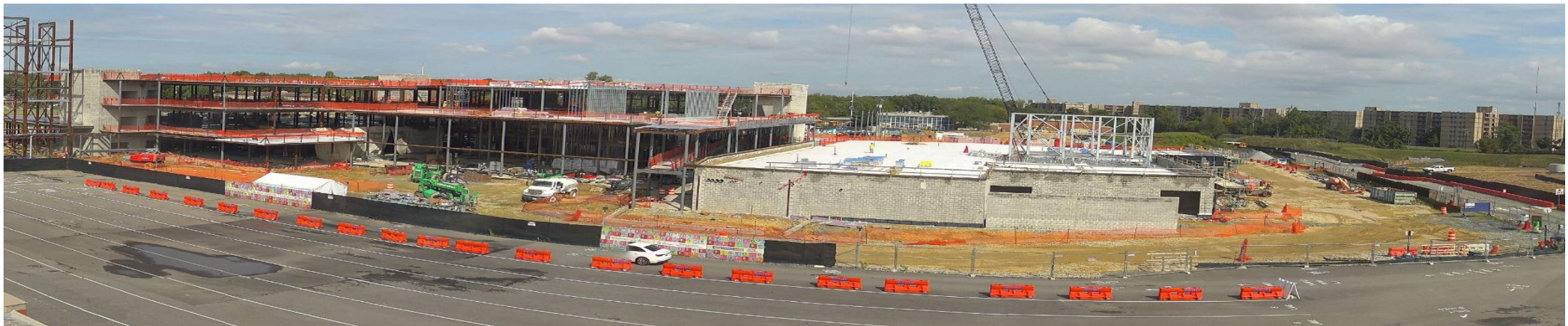
North View - Steel and CMU



Construction Update

Last Meeting and This Meeting

South View - CMU and Steel



Construction Update

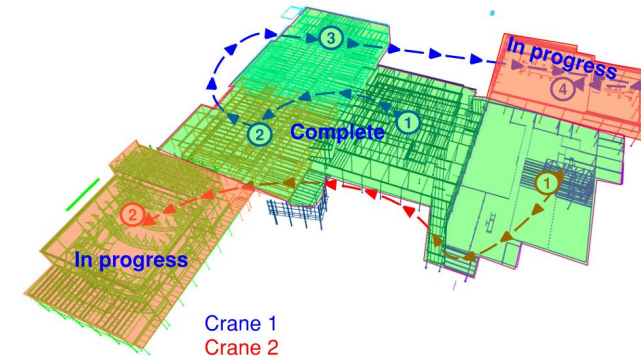
Last Meeting and This Meeting

South View - Area C - Completed Foundation - Steel and CMU



Construction Update

Structural Steel Construction



Area A



Area C



Area F



Area B,D, E



Construction Update

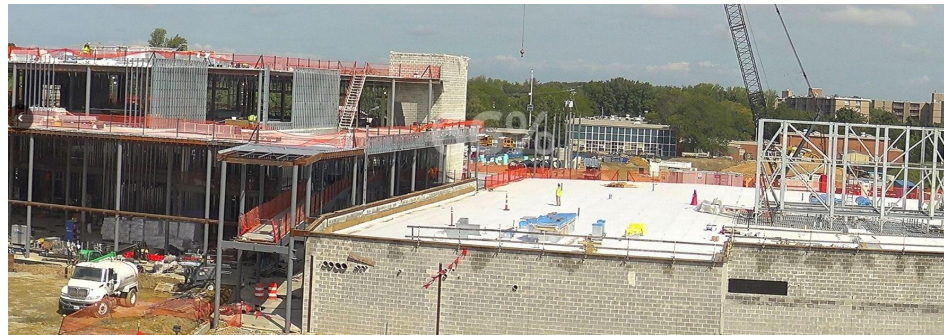
Exterior Framing, Parapet Framing, Roofing



Exterior Framing South



Exterior Framing North



Roofing

Construction Update

Spray on Fireproofing and Interior Framing



*Spray on Fireproofing
Interior Framing
MEP Overhead Rough In*



Prefab Electrical Closet



Locker Room Bathroom Plumbing

Construction Update

Next Steps



Building Envelope Watertight Milestone

Mechanical, Electrical, Plumbing and Fire Suppression Fitout



Construction Update

Major Completed Work	Work in Progress	Next Steps
Steel Construction Area A, B, D, F	Steel Construction in Area C, E	Installation of Mechanical, Electrical, Plumbing overhead rough in
Slab on Metal Deck D, B/A level 2	Slab on Metal B/A level 3	Installation of Mechanical Electrical, Plumbing, in the wall rough in
Spray on Fireproofing D level 1 & 2	Spray on Fireproofing B, F	Spray on Fireproofing Area A, E
Mechanical, Electrical, Plumbing Rough In Area D, B level 1,	Mechanical, Electrical, Plumbing Rough In Area F, B level 2, B level	Mechanical and Electrical Closet Fitout
Gas Line Installation to 10 ft outside the building footprint	Exterior Wall Framing Area D	Exterior Framing in Area B, A, C, E and F
Wall Framing in Area D and Stairs 2, 11 and 12.	Major Milestone for Structural Steel Complete	Continue Interior Framing and Stair 1, 3, 4, and 5

Communications & Engagement



Communications

- Community Meetings: Spring and Fall
- Construction Notifications
- On-site Time Lapse Videos
- Capital Programs Newsletter

Community Engagement

- Student Engagement Opportunities
- Topping Out and Ribbon Cutting
- Community and Dignitary Tours
- Alumni Outreach and Programming

Communications & Engagement

Recent Activities

- Turner participated in the Back-to-School Drive in partnership with First New Hope Baptist Church.
- Teacher School Supply Drive (Partnering with First New Hope Baptist Church)
- A competition for designing a banner or T-shirt for the Topping-Out Ceremony is currently underway

Upcoming Activities

- Hard Hat Sticker Competition for Phase 2

Q&A

- Please type your questions/comments in the Q&A area of Zoom.
- Questions and answers from this town hall will be posted on the Suitland HS project page at www.pgcps.org/offices/capital-programs.
- If you have additional questions, please email them to capital.programs@pgcps.org.



Thank You!

To submit additional questions and to view today's presentation, visit the project webpage at bit.ly/DCP-Suitland.

To receive the Department's news and updates, join the mailing list at bit.ly/DCP-Mailing or scan the QR code below.

